



John Scott

# POWA

# Community News



POWA

November 2023

www.waikouaiti.co.nz | East Otago Events Centre 203 Main Road, Waikouaiti  
Facebook.com/ProgressofWaikouaitiArea | powa.editor@gmail.com

## Inside This Issue

### Page 2 Caring Community : Buddy Programme.

Started over 30 years ago in Dunedin, the Buddy Programme is the longest running mentoring programme in New Zealand.

### Page 3 Local Schools Amazing Activities:

A new Pump Track, helping the community and a record breaking book sale are just a few of the things our schools got up to this month.

### Page 10 OneCoast:

How a waste minimisation society measures the volumes saved from land-fill.

### Page 11 Hawksbury Lagoon:

A small team have been going out each week to search for geese nests so the eggs can be pierced soon after laying to prevent the foetus developing inside...

### Page 8 Colouring Competition:

Colour the Christmas image either in person or online and be in to win a great prize before Christmas!



Deadline for copy / advertising for December Edition :  
**November 26th Sunday 6pm**  
email:  
powa.editor@gmail.com

## Waikouaiti Community Spring Show

The Spring Show this year was considered a tremendous success! This was in no small part, due to the volunteers who helped set up and run the show, as well as those that exhibited. Without the exhibitors, the show would not exist! Although the daffodil entries were down on previous years this was made up by the large amount of entries in the Cut Flower section.

The quality of handcrafts displayed was a credit to those involved. The children's art is always an added attraction and thanks must go to the Hawksbury Lagoon Committee for sponsoring this part of the show.

Holding the Spring Show in conjunction with the Community Fete proves beneficial to both groups with large numbers through the door. Special thanks to Zeagold Foods, WAE, East Coast Passenger Services, Statement Trees and the Waikouaiti Garden Club members.

### Trophy winners :

Open Daffodils : Sally Baird  
Open Daffodils Runner up : J & J Cuthbertson  
Intermediate Daffodils : Lesley Brown  
Novice Daffodils : Crissie Hart  
Premier Bloom : Crissie Hart  
Cut Flowers : Kath Ryan  
Decorative : Lesley Brown  
Best Arrangement : Lesley Brown  
Handcraft : Pauline Beattie  
Most points in show : Sally Baird  
Children's Junior Cup : Thomas Mossman  
Children's Intermediate Cup: Indigo Ollerenshaw

### Raffle Results

Deluxe Hamper : Jude Ritchie (No.19)  
Hamper : Kate Rice (No.20)  
Washing Basket Hamper : Judy deClifford (No.62)  
Deluxe Pamper Pack : Anita Vickers (No.69)  
Pamper Pack : Louise Ritchie (No.38)  
Camelia : Faye Norris (No.52)  
Shrub : Chelsea Morrison (No.25)



First Prize: Floral Art, Lesley Brown



The impressive variety of cut flowers.



Cut flowers, Daffodils and children's art.



Handicraft entries: First prize, Wendy Cline.



## Caring Community: Buddy Programme

**D**o you want to make a difference in the life of a child in our community? The Buddy Programme contributes to the emotional and social well-being of children by matching them with a carefully selected adult volunteer who meets them for a couple of hours each week to have fun and learn new skills. Little Buddies are aged between 5-12 (their formative years) and most referrals come from teachers or parents.

Started over 30 years ago in Dunedin, the Buddy Programme is the longest running mentoring programme in New Zealand. The East Otago programme started in January 2001 when Jo Scott from Karitāne was appointed Co-ordinator. The area covers Hampden, Macraes, Palmerston, Waikouaiti and down to Waitati.

Reasons for referral are many and varied. Jo says: "Do contact me if you want to know if your child is eligible."

The plan is for the child: Little Buddy - to benefit from spending regular time with an adult: Big Buddy - from outside the family, having fun and learning new skills".

Both the family and the child must be keen for the buddy relationship to work, family support is crucial.

How do you become a Big Buddy?

All volunteers are interviewed and police checked before going through our training. There's no upper age limit for volunteers, male volunteers are especially welcome. The volunteers range from university students, teachers, gardeners, golfers and grandparents to empty-nesters - having fun and enjoying activities with a kid is the only essential"



What sort of a commitment is it?

"I match Big and Little Buddies together through their shared interests. You meet your Little Buddy for 2 hours a week for a minimum of a year to enjoy activities together. These can be baking, board games, tennis, soccer, golf, rugby, crafts, swimming, fishing, going to the library, or walking on the beach. Having an animal - a dog or a cat for example is a bonus and any activity that you might do with a grandchild, usually works.

During school holidays most buddy pairs have a break so the family can do their own thing. We also share group outings and walks when the kids get to meet and have fun with the others.

"To monitor that all is going well for the buddy relationship, I am regularly in touch with the family as well as the adult buddy. The adult volunteers meet for group supervision once a month to share ideas and activities" says Jo.

"During my time as Co-ordinator, I've seen some very cool changes and connections made with the children. Whether a match is long or short-term, they have learned and had fun. It's a privilege to see the friendships develop" says Jo. "So don't hesitate to contact me if you want to discuss your child, or want to know more about volunteering."

More Information - Website:

<https://psotago.org.nz/services/families/buddy-programme/>

Contact: [jo.scott@psotago.org.nz](mailto:jo.scott@psotago.org.nz) Phone: 021 268 4780

**Catherine Robinson**

If your organisation provides a service for our community, we would love to feature it. Contact Rachel, [powa.editor@gmail.com](mailto:powa.editor@gmail.com)

## East Otago Plunket Round-Up

**T**he East Otago Playgroup in Waikouaiti and the Palmerston Playgroup are running during term 4 on Wednesdays between 10.00 and 12.00 at the Plunket Rooms in the East Otago Events Centre and on Thursdays between 10.00 and 12.00 (note the slightly extended hours!) in the Plunket Rooms in the Palmerston Community Centre.

Water confidence / swimming classes are being held this term on Friday mornings at Moana Gow Pool in Hawskbury. Don't worry if you missed out - they will be held again in Term 1 next year!

The first ever local swimwear and swim gear exchange initiative for under-fives was held on Saturday 14th October ... this event was successful enough to consider repeating this annually!

The annual Spring Seeds Fundraiser held last month raised over \$150 with all funds raised being put back into the provision of Plunket community services in East Otago. Thank you to everyone who supported this.

If your child needs a Plunket appointment, or for any other clinical enquiries please call 0800 184 803.

Ngā mihi nui  
**Annabel Kuzma**

Community Services Co-ordinator

[annabel.kuzma@plunket.org.nz](mailto:annabel.kuzma@plunket.org.nz)  
027 2291 608



  
**plunket**  
whānau āwhina

PlunketLine 0800 933 922  
[plunket.org.nz](http://plunket.org.nz)  
[facebook/PlunketNZ](https://www.facebook.com/PlunketNZ)



## Karitāne School

**W**elcome back to term four! Blink before you miss it! We've got a LOT to pack in before we wind up for the year.



Firstly, a HUGE thank you to all who came and supported our fundraising book sale. Whether it was to buy a book (or two), grab a snag or a bacon and egg buttie, climb a tree or have a delicious coffee and cake - THANK YOU! We had a GREAT turnout on the day which resulted in the highest total we've ever raised - just under \$7000.00 Of special note was the awesome team effort of our parent community, led by Shelley Gorman. This will be Shelley's last year co-ordinating the book sale and we would like to thank her for all her hard work, blood, sweat and tears over the years!

Our tamariki have been very busy - over the last couple of weeks, our Seniors have been to a planting and river health day up at Goodwood, represented our school at the East Otago Athletics and finished up last week with a cheeky golf lesson at Waikouaiti Golf Course. While the Seniors were otherwise engaged, Juniors were brushing up on their bike skills in preparation for their foray down 'THE BIG EASY' which is happening in early November. We are also looking forward to attending the Ukulele Jam, having another crack at golf, school swimming every Thursday, having our school photos taken with the amazing Edith Leigh and welcoming our VIP's (Very Important Pre-schoolers) on Friday afternoons as they come in to get to know our school, children and teachers.

**Nicola Philip**  
Tumuaki/Principal,  
Karitāne School  
[www.karitaneschool.co.nz](http://www.karitaneschool.co.nz)



The seniors enjoyed a golf lesson



Some of our incredible Book Sale heroes!



Seniors have been to a planting and river health day at Goodwood

## Waikouaiti School

The children have loved the new pump track that has recently been installed on school grounds. It is extremely popular with children and their families who are returning to school in the evenings to ride and meet.

The Waikouaiti School Board of Trustees would like to thank DCC Parks and Reserves, the Otago Community Trust and Waikouaiti Friends of the School who all contributed funding for this project to go ahead.

It was also great to get the support of the Waikouaiti Coast Community Board and POWA to help with funding applications. This new Waikouaiti community asset has been in the pipeline for a long time and will cater to a variety of age groups for many years to come.

Nāku noa

**Mark Edwards**  
Principal Waikouaiti School  
[principal@waikouaiti.school.nz](mailto:principal@waikouaiti.school.nz)



Waikouaiti School's new pump track



An aerial view of our pump track



## PEWS NEWS

### Anglican Church

#### St John's Church

Nov 5th Join Presbyterians in Karitāne

Nov 12th Service at St John's with Joy Hamilton-Jones

Nov 19th Join Presbyterians in Karitāne

Nov 26th Join with Presbyterians in Kildare Street

Any person needing to contact St John's Church please phone **Bev Medlin** on 0273079100

### Hawksbury Christian Fellowship

Services at 10am every Sunday at Hawksbury Village Chapel.

Also weekly bible study groups, ladies' group, and monthly men's breakfast. All welcome.

#### For more information contact:

Rodger and Ruth Mangai  
021 126 5775 or

Peter and Thelma Arnott 027 235 8397

### Presbyterian Parish of Waikouaiti - Karitāne

Nov 5th 10am Communion service at Karitāne shared with Anglicans

Nov 12th 10am Shared Eucharist at St John's

Nov 19th 10am Service at Karitāne  
Nov 26th 10am Service at Kildare St Waikouaiti

### St Anne's Catholic Church

CATHOLIC SERVICES MASS  
TIMETABLE

Hampden - 1:30pm 2nd and 4th Sunday of each month

Waikouaiti - St Anne's 12pm each Sunday of the month

**LIONS CLUB OF PALMERSTON**

## Fertilizer Drive

QUANTITY	COST	NUMBER OF BAGS	COST	TOTAL
Lime				
15kg Bags		.....	\$7.00	\$.....
Blood & Bone				
5kg Bags		.....	\$14.00	\$.....
Lawn Fertilizer				
5kg Bags		.....	\$9.00	\$.....
Sulphate of Ammonia				
5kg Bags		.....	\$9.00	\$.....
Sheep Manure per Bag		.....	\$7.00	\$.....
Saw Dust Large Bags		.....	\$7.00	\$.....
Pine Cones per bag			\$7.00	\$.....
			<b>TOTAL</b>	<b>\$.....</b>

Thank you to Otago Transport, Balance Fertilizer and Hewvan Timber for their continued support.

PAYMENT WITH ORDER, ON DELIVERY OR DIRECT TO OUR BANK ACCOUNT  
0309370507118000

RETURN ORDER TO

RONALD SHEAT: Phone/Text 0274311535, [harpsdale@live.com](mailto:harpsdale@live.com)  
61 Chisholm Road Palmerston, RD2  
BRUCE LEE: Phone 0272127075, [brlee@xtra.co.nz](mailto:brlee@xtra.co.nz)  
15A Collins Street, Waikouaiti 9510

CUSTOMER NAME.....  
ADDRESS.....  
PHONE.....

**ORDERS WILL BE DELIVERED ON  
SATURDAY 25th NOVEMBER 2023**

Or by arrangement.



## POWA Community Report

Spring has arrived and with it, beautiful long evenings and sunny days. The past month has been a busy time for POWA with our annual Community Fete and the Community Sunday Lunch.

Our Community Fete in conjunction with the Spring Show has become a resounding success and grows bigger every year, not only in terms of its ability to bring our neighborhoods together but also for the significant impact it has on our community as a whole. The fete serves as a vibrant celebration of our shared values, traditions, and the sense of unity that brings us together. A big thank you to all the lovely stallholders and local community groups. The lucky winner of POWA's 'money tree' was: Laurel Chaddick.

In October we held a Community Sunday lunch. This was an opportunity to foster connections and strengthen the bonds within our communities. It provided a platform for residents to come together over kai and engage in meaningful conversations. It was our intention to promote a sense of belonging and build a sense of unity between our communities. Thank you to Kellie Simpson and her team for the delicious three-course lunch, Simon Kingsley-Holmes for compering and Kati Huirapa Runaka ki Puketeraki for co-hosting this event with us. We would also like to acknowledge and thank Beano's Bakery, Cr Andrew Noone, Matanaka Meats, Dunedin City Council and the local communities for their support.

Future events to keep an eye out for this year include our annual Christmas High Tea on the 2nd of December (advertised in this issue). We will be running three separate Hui's, in 2024 and hope you will attend the ones that interest you;

- Emergency response featuring hazard awareness, individual and community preparedness.
- New findings in groundwater data, individual property risks and managed retreat.
- The main street of Waikouaiti, 10-30 year plan, Dunedin City Council and community role and responsibilities.

Every three years the Dunedin City Council delivers a 10-year plan, sometimes called a Long Term Plan because it's planning for a whole decade of activities and services. It's a long hard look at what they have done, what they are doing and what they should be doing from 2024 to 2034. You had until the 31st October 2023 to complete a survey on the DCC website but if you missed this, you can pass your thoughts on to a Community Board member to include in their submission.

Lastly, POWA is in consultation with mural artists for the commissioned work on the wall beside the Oddity store. If you would like to make a contribution towards this Main Street project you can do so by scanning the QR code or online at: <https://bit.ly/MainStreetMural>

Sonya Billyard



Scan to go to the Givealittle page

### The Waitati Warblers

a cappella singers



**Come along and be entertained with their worldly, wonderful and eclectic repertoire!**

Sunday Dec 3 at 3.30 pm  
St James Presbyterian Church  
80 Tiverton St  
Palmerston

Gold coin donation towards the ongoing Church refurbishment appreciated

## FOOD DRIVE

When you hear the fire siren around your streets, come out and say hello. Please support your local food bank. We accept all non-perishable goods e.g. can food, cereals, pasta and Christmas food items. We also collect cash donations or supermarket vouchers.

**WAIKOUAITI**  
Wednesday 6th December 7pm-9pm

**HAWKSBURY/KARITANE**  
Wednesday 13th December 7pm-9pm



**WAIKOUAITI FIRE BRIGADE**

## Waikouaiti Coast Heritage Centre

Progress is being made on the restoration of the old Bank building, not that you will see anything happening quite yet. The Dunedin City Council has granted us a further \$20,000 to enable Origin Consultants to continue to progress with the background work of refining the Concept Design and if necessary, preparing a Resource Consent application. Their work will also incorporate more detailed planning of what will be needed, in terms of restoration and repair, particularly in the kitchen/laundry area of the building.

The gift shop is busy gearing up for the festive season, with new stock arriving weekly. A range of 2024 calendars, with NZ themes, are now in stock and are always a good idea for sending overseas as are our two local tea towels, one by Derek Onley featuring birds found at the Hawksbury Lagoon and one from the heritage centre featuring all the ways "Waikouaiti" has been spelt in old documents/books, it is quite unique.

Personally, I will be trying very hard to avoid the CBD, with all its street detour confusion and lack of parking and will aim to do my Christmas shopping locally. Perhaps avoiding town as much as possible will suit you too, particularly at this busy time of year. Keep checking in with us to view our newly arrived stock. You will be pleasantly surprised, I'm sure.

Our featured artist of the month (until November 12th) is Terry Low. He is a local artist with a wealth of artistic experience. Terry's paintings will feature scenes from around the area. Following Terry we will have Kate Middleton as our featured artist, another local and talented artist.

Opening hours: Wednesday/Thursday 1-4pm, Friday/Saturday/Sunday 10am - 4pm.

S McKewen



A selection of Terry Low's artwork on display at the Waikouaiti Coast Heritage Centre

## East Otago Community Health Trust

Annual General Meeting will be held in the East Otago Events Centre, Waikouaiti on Monday 20 November 2023 at 7p.m. All Welcome.

**Alan Smaill**  
**Plastering**

48 years experience in Gib-stopping, solid plastering, roughcasting, wallpaper, paint finish.  
Call 027 487 2370

**Better.**

Branding . Printing Projects  
Web Design . Digital

[bettercreative.nz](http://bettercreative.nz)

**WAIKOUAITI FOOD CENTRE**

Your local food store has just what you need when it comes to shopping for your daily grocery essentials, locally sourced produce, beer/wine and NZ postal services.

Enjoy your shopping with more savings on in store promotions and every day low-price deals. Please follow us on our Facebook page @Waikouaiti food center for latest deals.

Waikouaiti Food Center  
186 Main road, Waikouaiti 9510  
Email: [Waikouaiti.fc@gmail.com](mailto:Waikouaiti.fc@gmail.com)  
Ph: 03 4657164



## Waikouaiti Bowling Club

The bowling season is well under way with some good weather to match. Congratulations to Debra Hamilton on being selected in to the Dunedin Centre development team. This involves some inter provincial games. A big plus for Debra and the club.

New members most welcome, every Thursday at 2pm.

For further information contact:

Barry at 0274352473, or Colleen at 00275119897

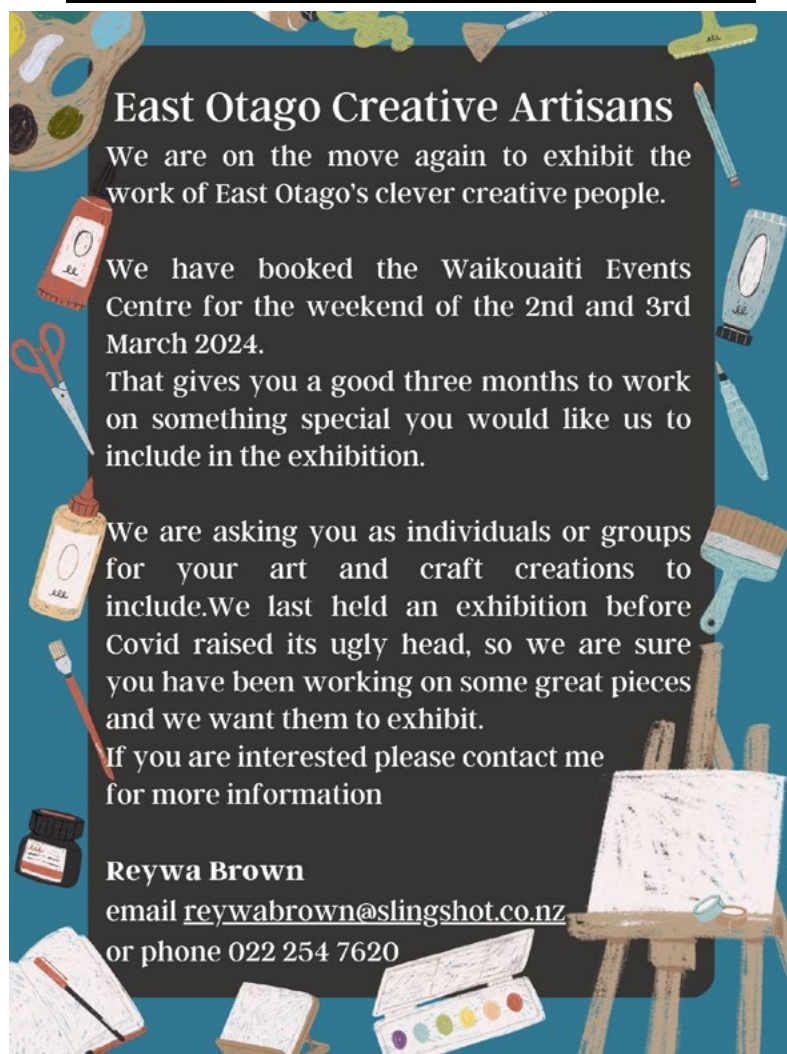


**Community based non-profit early childcare centre**

Welcomes children and their families/whānau from zero to six years for education and care.

- Our opening hours are 8am to 4pm Monday to Friday.
- We provide the government funded 20 hours for three and four year olds. WINZ subsidies are also available.
- You and your family/whānau are very welcome to visit our centre to meet the staff and have a look around.

5 McGregor Street, Waikouaiti  
Ph: (03) 4657 319  
bigsteps@xtra.co.nz



## East Otago Creative Artisans

We are on the move again to exhibit the work of East Otago's clever creative people.

We have booked the Waikouaiti Events Centre for the weekend of the 2nd and 3rd March 2024.

That gives you a good three months to work on something special you would like us to include in the exhibition.

We are asking you as individuals or groups for your art and craft creations to include. We last held an exhibition before Covid raised its ugly head, so we are sure you have been working on some great pieces and we want them to exhibit.

If you are interested please contact me for more information

**Reywa Brown**  
email [reywabrown@slingshot.co.nz](mailto:reywabrown@slingshot.co.nz)  
or phone 022 254 7620

## Waikouaiti Library

### Waikouaiti Library Hours

Monday – Friday: 11am – 5pm

Saturday: 10am – 1pm

### DCC Service Centre Hours

Monday – Friday: 11am – 5pm

### DCC Service Centre:

Get your Bee Cards and top-ups, pay your rates, register your dog, pay parking fines, buy DCC rubbish bags, get your 75+ parking permit.

**Free seeds at Waikouaiti Library:** veges, herbs and flowers to get your garden growing!

The packets of seeds are free for everyone and are kept in a small set of drawers behind the counter. Currently, we have lettuce, beans, pumpkin, kale, basil, calendula, parsley, larkspur, geum and many more! Maybe you know someone who might like a packet of seeds in their Christmas card or stocking?

Please take just a few packets at a time to make sure there's enough for everyone. Each packet contains enough to suit most home gardeners for example approximately 12-20 tomato seeds.

If you have spare seed to share with others or can save some seed from this growing season then we'd love to have it to re-seed the library. We'll need to know the common name and year of harvest, plus the varietal name if you know it, and anything else that would be helpful to growers.

Any enquiries to Amanda at the library on 465 9110.

### Dementia- Friendly Book Chat

Wednesdays, 11 am-12 midday

With a cup of tea and a biscuit; All welcome. Digital Library <https://www.dunedinlibraries.govt.nz/digital-library>

Read e-books, listen to e-audio, read world newspapers (Press Reader), watch free movies (Beamafilm), enjoy a graphic novel (Comics Plus), do an online jigsaw (Jigsaw Explorer),

**NEW: Creative Bug** - art & craft video classes taught by recognized design experts and artists.

### LEGO Club

Make something cool with our LEGO. First Saturday of the month: Saturday 4th Nov at 11 am

### Wriggle and Rhyme

Music and movement for babies and toddlers (during school term) Friday mornings at 10.30 am

### Storytime

Bring your child along to the Library for stories suitable for babies and pre-schoolers (during school term)

Friday mornings after Wriggle & Rhyme

## East Otago Events Centre

October was a busy month for the Centre as improvements that the Committee had requested were finally carried out by the DCC contractors. The ramp at the side entrance from the car park has been the subject of complaints for many years due to people slipping on its surface, especially when wet. A different coating was put on it but the process was not carried out to the finish on the same day. As a result, some of the coating was tramped into the carpet and bare patches were left on the ramp. Fortunately, the DCC officials visited and, discovering the unsatisfactory workmanship, recalled the contractors who did a much better job of it in the end.

Another problem that has been a hazard for years was the lower level of the area immediately outside the kitchen emergency exit and next to the ramp. This has also been sorted with a grating over the area raising it to the same level as the ramp.

The Centre was again used for the General Election. The convenience of the car park and the Centre's location make it a suitable venue for this event.

However, the highlight of the month was undoubtedly the magnificent, free lunch including a three-course meal and entertainment which was hosted by the POWA team in conjunction with Kāti Huirapa ki Puketeraki. This event was both inspirational and greatly enjoyed by well over a hundred members of the community. Thanks to all who so generously contributed their time and efforts to make this event so successful!

For information, contact the Secretary, Eva, on 465 7790 or 027 756 3497 For bookings, contact Sharleen on 021 0825 5735 or email [eoec.info.bookings@gmail.com](mailto:eoec.info.bookings@gmail.com)



## Got a dog that needs walking in East Otago?

Whether it's a geriatric doggo that needs a gentle coaxing up a hill or a woofing missile that needs a pack adventure, I've got experience, energy and a plan for them all.

And if you're going to be away, I also offer home visits where I can drop in to feed and/or medicate your furry friend.

Get in touch with Scotty at [needsawalk@gmail.com](mailto:needsawalk@gmail.com) or 021 072 9158

TREE CLIMBING - TREE REMOVALS  
PRUNING - PLANTING - HEDGES



O'CONNELL  
TREE CARE

Qualified Arborist  
Reuben O'Connell  
0223821297

**bd BARRY DELL**

• Plumbing • Roofing • Drainlaying • Gasfitting  
Commercial and Domestic Repairs + Maintenance

[www.barrydellplumbing.co.nz](http://www.barrydellplumbing.co.nz) enquires@barrydell.co.nz

104 South Road 'The Glen' South Dunedin

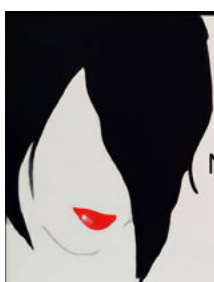
PHONE 455 4100



## Eastern Rugby Football & Netball Club Annual General Meeting

Monday 20th November 7pm at The Eastern Rugby Clubrooms, Matanaka Drive, Waikouaiti.

All members and anyone interested in joining are welcome.



**SkevAli Hair Studio**  
*Inspire Create Refine*

Not taking new clients at present

Alisha Skevington  
Qualified Hairdresser

11 Mount Street  
Waikouaiti  
Otago  
Ph: 022 0990755



**FOOD BANK**

EAST OTAGO  
FOODBANK  
PROJECT  
HELPING OUR  
COMMUNITY

Need help?  
[community.powa@gmail.com](mailto:community.powa@gmail.com)

WE ACCEPT ANY NEW OR  
UNEXPIRED FOOD ITEMS



We're locally and family owned and operated which means we'll always be here when you need us

Compassionate guidance, support and advice 24/7

**GILLIONS**  
FUNERAL SERVICES

Ph: 03 455 2128 (24hrs)  
Toll-free: 0800 858 555  
407 Hillside Rd, Sth Dunedin  
[www.gillions.co.nz](http://www.gillions.co.nz)



## Waikouaiti Volunteer Fire Brigade

**H**ello everyone,  
Welcome to the Waikouaiti Volunteer Fire Brigade report for October 2023.

From the writing of last month's report to this month's report we have had 8 calls for the month.

- MVA x 2
- Fire x 3
- Medical x 1
- Weather event x 2



### Weather

We are still getting windy days so please make sure you check that any fires you have had going are completely out, as these strong winds we have been having can start a fire back up and it doesn't take much for the embers to get blown into nearby trees etc.

If you are not sure if it is safe to light a fire, then please go onto [checkitsalright.nz](https://checkitsalright.nz)

### Smoke Alarms

Waikouaiti Fire Brigade can supply and install smoke alarms into your home or rental property (it is law that all rental properties have working smoke alarms). Please give us a call on a Wednesday night to see which alarm would suit your home.

We still have a number of smoke alarms that we are installing into certain homes free of charge, Please give us a call on a Wednesday night to see if you fit the criteria as it would be great to see every home in our area have working smoke alarms.

### Waikouaiti Ute Upgrade

This is still ticking along with some more funds coming in, we have had some donations from locals which is great to them getting behind this important update to our vehicles. If you would like to donate towards our Ute then please get hold of one of the crew or give us a call on a Wednesday night from 7pm.

Are you prepared for an emergency?

Visit <https://getready.govt.nz/>

<https://www.civildefence.govt.nz/get-ready/prepared-for-an-emergency>

**David McLeod,**

**Chief Fire Officer Waikouaiti**

Follow us on Facebook @ Waikouaiti Volunteer Fire Brigade

Remember in an emergency dial 111 and ask for the service you require Police, St Johns or Fire.

Fire Station PH Number: 03 465 7386 (between 7.15 pm and 9 pm only on a Wednesday night only)

**Dressmaker**  
on Main

**EXPERIENCED DRESSMAKER**  
who thinks outside the square  
*by appointment only*  
phone Lesley 021 156 9262

**BLUESKIN ELECTRICAL**

SPECIALISING IN:  
ALL TYPES OF RESIDENTIAL & COMMERCIAL WORK  
RENOVATION WORK NEW BUILDS INSTALLATION & SERVICING

027 275 3977 [info@blueskinelectrical.co.nz](mailto:info@blueskinelectrical.co.nz)

**E**

**Vicki Offen**  
021 212 7842  
[vicki@edinburgh.co.nz](mailto:vicki@edinburgh.co.nz)

**Edinburgh**  
Edinburgh Realty Ltd. Licensed under the REAA 2008

**Jeffrey Dennison BUILDERS**

Specialising in new homes, alterations, renovations and general building work. Quality building at its best.

Visit our website: [www.jdbuilders.nz](http://www.jdbuilders.nz)  
Contact: 027 354 1754 [jeff@jdbuilders.nz](mailto:jeff@jdbuilders.nz)

## OneCoast

A great thanks goes to Mark Brown, Andy Barratt and Mike Mullens for planning and carrying out OneCoast's Biochar, Worm-farming and Soil-enhancement workshop on October 8.

We have since heard from people who did not know it was on and would have attended had they known! We hope to be able to hold a similar workshop in the new year, maybe back in the Waikouaiti/Karitāne area and will advertise widely.

Our other new activity this month has been an attempt to measure the volume of goods that pass through our hub. It is important for us to be able to report back to the City Council, and for evidence when applying for funding. The easiest way to do this is to measure donations as they come in, so we have started collecting and recording them at a donations table.

We are using a volume measure everyone will recognize, banana boxes full, or bbs for short! A bb has a volume of 40 litres, but translating the huge range of goods we receive into bbs, has been a bit of a challenge. For example, if someone comes in and says they have a lady in pieces in the back of their car, is a mannequin 2, 3 or 4 bbs?

So our estimate is very rough, and we have missed many goods in the rush, but over October we have taken in over 150 bbs worth, which equates to over 6 cubic metres of packed goods that have not gone to landfill. Well done to all our donors!

**Judy Martin,**  
OneCoast chair

phone: 021 130 7765  
email: [chair@onecoast.org](mailto:chair@onecoast.org)



The BioChar workshop in full burn!



Waiting for her new home after her volume was estimated.

## OneCoast Opening hours

### Transfer Station Container:

Wednesdays 12pm to 2:30pm

Sundays 1:30 to 3:30pm

### Main Street Office:

Wednesday 9:30-12:30

Thursday 9:30-12:30

POWA is a registered charitable organisation that builds community connections and promotes the wellbeing of families and whānau. We love to hear from you! Send us your local photos and stories. The deadline for newsletter copy is the last Sunday of the month. Please keep your contributions to 250 words or less.



[powa.editor@gmail.com](mailto:powa.editor@gmail.com)



(022) 023 1175



[facebook.com/POWA](https://facebook.com/POWA)



P.O. Box 21, Waikouaiti, 9510



203 Main Road, Waikouaiti



## COMMUNITY EMERGENCY HUB

Your go to in an emergency:  
Waikouaiti – East Otago Events Centre  
Karitāne – Puketeraki Marae

## EAST OTAGO EVENTS CENTRE BOOKINGS

Email: [eoec.info.bookings@gmail.com](mailto:eoec.info.bookings@gmail.com)

## Mobile Hairdresser

SHARON GOOMES.



VISUALIZE HAIR

CUT, COLOURS  
MEN, WOMEN  
AND CHILDREN



0272880642

# ONECOAST

## RESOURCE RECOVERY



Palmerston

Waikouaiti



## Hawksbury Lagoon

A small team from the Lagoon Committee assisted by Paul Smale from Dunedin Forest and Bird Society have been going out each week to search for geese nests so the eggs can be pierced soon after laying to prevent the foetus developing inside. The geese will obligingly hop off the nest and stay with their mate close by usually protesting loudly. They will return to the nest and continue to sit out the incubation period. The nests are revisited up to every 7 days to check for new eggs. The domestic (greylag) geese were the first to start nesting and now it is the turn of Canada geese.

To date, over 150 eggs have been 'pricked' and this will have a significant impact on goose numbers with the intention of preventing the escalation in numbers evident since the pandemic shutdowns prevented the expert team of Derek Onley and Greg Kerr going out.

Most of the birds are nesting in the centre of the race course. Ian Waters and I have struggled our way around the Māori Fishing Reserve (we have permission to prick goose eggs on that area) and on the land between the golf club and Waipahi/Post Office Creek, checking for nests. Fortunately, there were none. Between emerging as either human pincushions from the gorse or muddied and mostly defeated by high clumps of tall fescue grass, these are not readily accessible areas. This contrasts with the racecourse area where the main obstacle is belly wriggling under the electric fences while avoiding goose poo.

However, there was one surprise discovery. An early flowering clump of *Cotula coronopifolia* (Batchelor's Buttons) a most delightful native plant that grows mainly in salt marshes. It can also be seen near the Inverary Street entrance but you may need to wait until December to see those little yellow buttons or check the website below.

<https://www.nzpcn.org.nz/flora/species/cotula-coronopifolia/>

Ruth Ferguson

### Lagoon Creature of the Month – *Tubifex tubifex* (sludge worm, sewerage worm)

This rather unattractive sounding species inhabits Waipahi/Post Office Creek close to Inverary Street. They are found all over the world but not very much is known about them. I have not been able to find out if they are considered native or introduced in Aotearoa/NZ. Helminthologists (people who study worms) are unsure if this is a single species or there are several similar species which are difficult to distinguish. This is because these creatures are usually identified by their reproductive organs but in *Tubifex* these get reabsorbed and disappear after mating. They also change appearance depending on their environment especially the amount of salt in the water.

These worms are named because they live off sludge at the bottom of lakes, streams and sewerage outlets. They can survive at low oxygen levels because they have haemoglobin oxygen-carrying molecules concentrated in their tails and they wave these about. This means they are commonly found in sewerage and polluted waterways. During droughts or when food supply is short they survive by forming cysts which have a protective coat and lower food demands. These worms feed on bacteria and can absorb molecules through the wall of their body. One significant problem is that they can feed on microplastic particles which will then pass to fish when they eat these worms and so can pass up into the food chain. *Tubifex* is a very popular fish (and axolotl if you have one) food. Imported freeze dried *Tubifex* is sold in many pet stores.

For further information see:

<https://inaturalist.nz/taxa/84890-Tubifex-tubifex>



Goose eggs have been pierced soon after laying to prevent the foetus from developing inside.



An early flowering clump of *Cotula coronopifolia* (Batchelor's Buttons)



*Tubifex tubifex* or Sludge/Sewerage worm- image by cst Reid.



**KEA TREEWORKS**

*Certified Arborists*

Tree Pruning - Removals - Chipping

For all your tree maintenance needs contact Kea Treeworks today!

Chris 027 484 3395 Jack 021 582 300  
keatreeemail@gmail.com  
keatreeworks.co.nz

## East Otago Blokes Shed

The Blokes Shed has been providing good camaraderie for the ten fellows attending each Wednesday morning and the seven or so coming to our Monday workshop. We have accepted a number of commissions from people in the area.

Namely, a hen house roost on skids for easy relocation on-site, Guinea Pig or rabbit hutch that is also moveable, to name a couple. We still have about 100 Carisbrook seats to assemble on their new frames.

To those who have already purchased these all-weather outdoor seats, thank you for your support.

Another core product has been small raised garden boxes. These articles may be seen on 'EOBS sales' on Facebook.

Predominantly we have been working with wood but recently we have made the decision to fit out our container to work with metal.

We have 26 members and if there are any other 'Blokes' in the area Waitati to Palmerston who would like more information please give Alan 020 4138 6324 Or Neil 0274 507674 a call.

**Neil Kennedy**



Planter box with trellis made by EOBS

## Community Board Update

The Dunedin City Council Draft Speed Management Plan 2024-2027 attracted a staggering 2,077 submissions – the most for any DCC draft plan. By far, the majority of people are not in favour of the blanket 30 kph proposal. As a Community Board, we submitted, in writing and in person. Our main theme was that we are all for safe speed management, provided that is Sensible and Practical. In our view, much of what is being proposed is neither of these. The Hearings Panel have a big job in front of them and I don't envy their task. No doubt we will see the outcome in a few weeks time.

We are starting to see significant growth of vegetation alongside our footpaths and roads. The DCC maintenance contractors work to a plan but, sometimes, this has to be altered to cope with unforeseen circumstances. If you are concerned about overhanging trees or long grass, you should phone 477 4000 to lodge your concern. If nothing appears to be happening, feel free to give me a call.

All Local Authorities are required to have a Long Term 10 Year Plan. It gets updated every 3 years and we are now at the time when we have to consider this. Like all Community Boards, we have a Community Plan which can be found on the DCC website. We are in the process of reviewing our current plan, and we would like to hear from any of you in the community who would like to see some changes.

Our next formal meeting will be held at 5.30 pm on Wednesday 8th November (the last for 2023) in the Warrington Surf Clubrooms. Among other things, we will be considering Grant Applications. If you would like some funding assistance for a community project, then please complete the application form on the DCC website or have a chat with a board member.

**Alasdair Morrison, Chairman, Waikouaiti Coast Community Board**  
0274 354 384 : [info@calmarine.co.nz](mailto:info@calmarine.co.nz)

## RGJ MOWER SERVICES

92 Thomas Street, Waikouaiti  
Russell Jenkinson  
Phone: 021 167 9646

Repairs and Servicing to Lawn Mowers including Ride-ons and also Chainsaws.

Chainsaw sharpening, new chains, parts and accessories  
Fast, friendly service

Free pickup and delivery  
Waikouaiti area only

## FOLEYS

ABOVE & BEYOND  
EVERY TIME

Plumbing, electrical,  
gasfitting and drainlaying.

Call **0800 30 35 30**  
or [foleys.co.nz](http://foleys.co.nz)

Help POWA create a fantastic Main St Mural to liven up our areat! Even the smallest donation will help. Please visit <https://bit.ly/MainStreetMural>

Find us on Google!  
Puketapu Radio 756AM



Puketapu  
Radio756am

- Waihemo Museum
- Information
- Souvenirs
- Giftware
- Second Hand Books





*Mark Your Calendars*  
**UPCOMING EVENTS**



**November 2023**

**November 11** Waitati School Blueskin Wide Garage Sale 10-2pm Maps at School

**November 14** East Otago Poets Tues 9.30-11.30 am Waikouaiti Library

**November 20** East Otago Community Health AGM 7pm East Otago Events Centre

**November 20** Eastern Rugby & Netball Club AGM 7pm Eastern Rugby Clubrooms

**November 24** Open Mike Poetry Night Fri 6.30 pm Waikouaiti Library

**November 26** Sunday 6pm Deadline POWA News Submissions/Ads

**December 2** POWA Christmas High Tea East Otago Events Centre 11am-12.30pm

**December 3** Waitati Warblers concert St James Church Palmerston 3.30pm

**December 6** Waikouaiti Fire Brigade Food Drive 7-9pm Waikouaiti

**December 13** Waikouaiti Fire Brigade Food Drive 7-9pm Hawksbury/Karitane

Later:

**March 2 & 3** East Otago Creative Artisans Exhibition East Otago Events Centre

**Colour In to Win!**

There will be 2 prizes from Southern Toys for the most creative entry 0-8yrs old and 9+

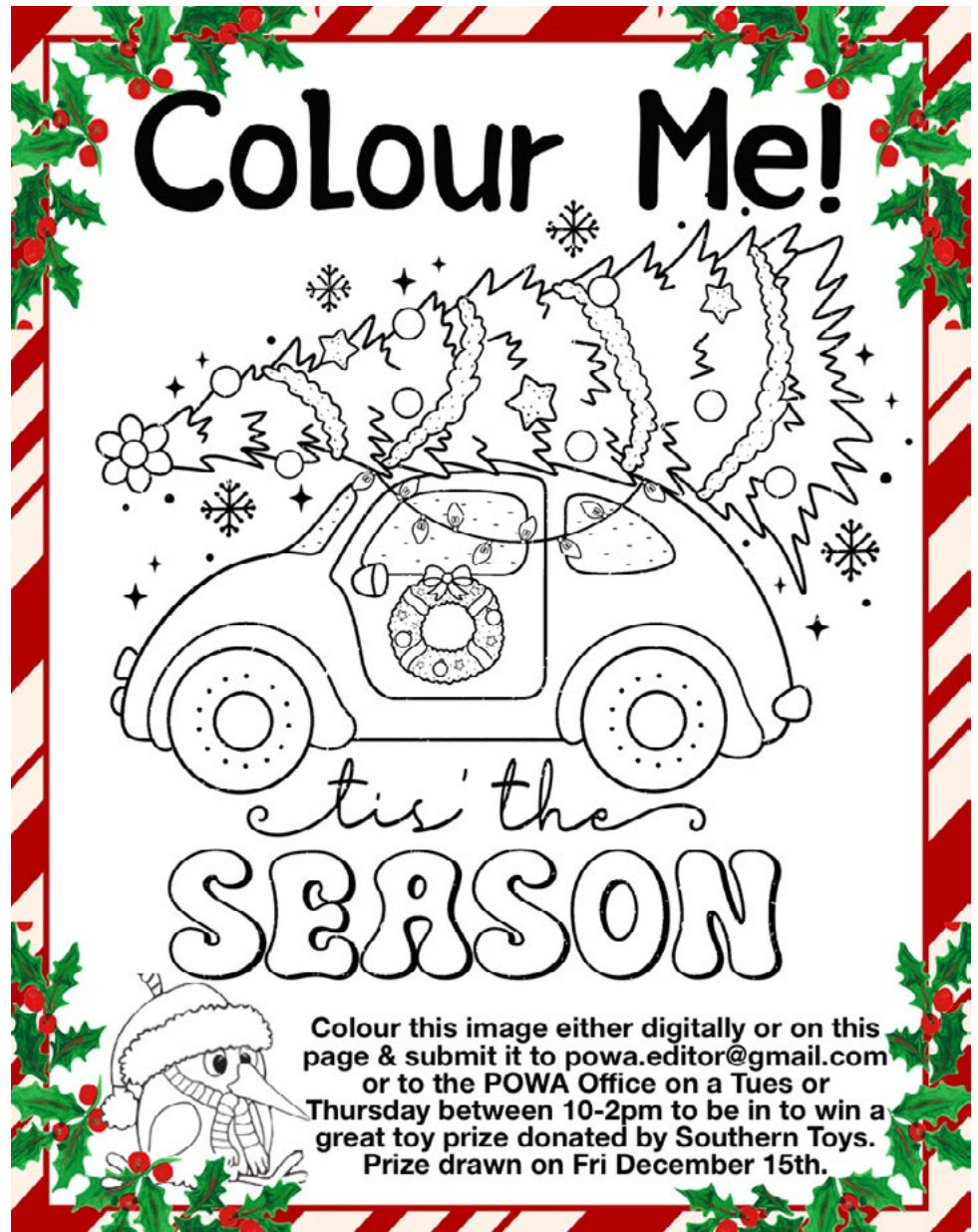
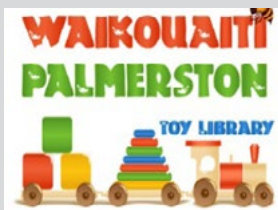
**Toy Library**

The Library will be open from 12.00- 1.30pm on Saturdays, excluding public holiday weekends, Easter and Christmas holidays. Please check out Facebook Page for dates of closure.

If you could spare some time to volunteer to help run shifts at the Toy Library please contact us by email at: [wptpylibrary@yahoo.co.nz](mailto:wptpylibrary@yahoo.co.nz)

Check out our website : [www.wptoylibrary.mibase.co.nz](http://www.wptoylibrary.mibase.co.nz)

or Facebook Page @WaikouaitiPalmerston ToyLibrary



## East Otago Health

**K**ia ora ko tou katoa: Here are some reminders from the team at East Otago Health in Palmerston and Waikouaiti.

### Shingles Vaccinations

This is a reminder about funding around this vaccine. It is only funded from the day you turn 65 years of age.

### Repeat Prescriptions

Thank you to all those who have been giving us plenty of notice that your medications are due to run out.

We have been able to fill these repeat prescriptions without advancements from the Pharmacy. We ask you to continue to give us as much notice as possible so as not to put pressure on any Pharmacies that we use.

### Liquid Nitrogen

Please call for an appointment, (sites for Liquid nitrogen should be viewed by a clinician prior to making this appt)

### RoboDoc

An automated Height, Weight, BP, (basic obs) "machine" is in our Palmerston waiting room. It is a free service for our registered patients, so come along and check out RoboMurray. Our team of friendly receptionists will help you navigate this if required.



East Otago Health

### Palmerston Clinic Opening Hours

Monday to Friday 8.30am to 5pm  
117 District Road, Palmerston 9430

### Waikouaiti Clinic Opening Hours

Wednesday 8:30am to 12:30pm  
203 Main Road, Waikouaiti

**Rural Support Trust** -  
0800 787 254

**Kidline** - 0800 543 754 (to 18 year olds)

**Whats Up** - 0800 942 8787 (5-18year olds)

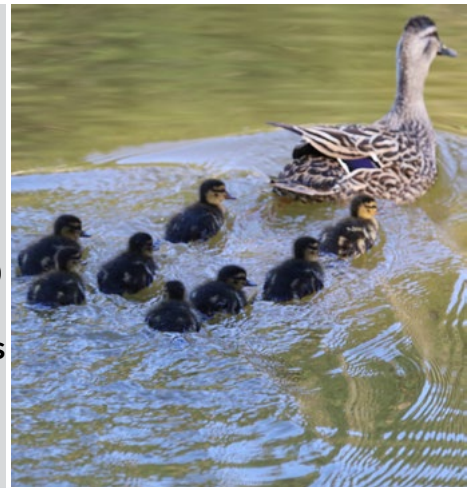
**Youthline** - 0800 376 633

**Anxiety NZ** - 0800 269 4389

**Suicide Crisis Helpline** - 0508 828 865

**After-hours and weekends we provide urgent and emergency care outside of clinic opening hours.**

**To speak the on call nurse phone 03 465 1444 - option 1**



There are so many young birds in the area at the moment - Bruce Dow

## Palmerston Dental Surgery Ltd

New patients welcome

Our team of qualified experienced dental surgeons & hygienist are committed to making your visit comfortable. Providing the highest quality dental care for your family.

- Evening & Saturday appointments
- ACC registered provider treatment
- Free dental care for under 18 years

Call today for your appointment

Waihemo Service Centre (Library Building)  
54 Tiverton Street, Palmerston 9430  
Tel: 03 465 1591  
After hours: 027 4812 491

## ONE AGENCY

THE PROPERTY SPECIALISTS



### RHYS & SARA VIDGEN

YOUR LOCAL COASTAL PROPERTY PEOPLE



R. 027 600 5450

S. 027 214 8119



vidgens@oatps.nz

Licensed REAA 2008

- Improved energy
- Reduced cravings
- Better Sleep
- Weight loss
- Improved gut function
- Improved hormone imbalance
- Improved mood
- Self control around food
- One on one support

## taste success

Simple Food | Great Support | Healthy Outcomes

Katrina McAra

0272526986

hello@kmfitnessandnutritionnz.com  
www.kmfitnessandnutritionnz.com

## Tall Poppy

REAL ESTATE

Leanne Black, now offering the same loyal service with **Fair Flat Fees** and New Zealand's **#1 FREE marketing package.**

Thinking of selling?  
**Lets Talk.**



### Leanne Black

027 552 5502

leanne.black@tallpoppy.co.nz

Bulsara T/A Tall Poppy Licensed under REAA 2008



# CLASSIFIED AND COMMUNITY NOTICES FOR NON-PROFIT ORGANISATIONS

## TRY SOMETHING NEW

### East Otago Creative Fibre (Spinners & Weavers)

1st Thursday of the month, 10am - 2pm. St John's Church Hall, Beach St, Waikouaiti. All welcome. Ph: Pam Sinton 021 02745979 or Judy Watson (03) 465 1178

### East Otago Art Group

Meet fortnightly at 10am - 2pm. St Johns Church, Beach Street. All welcome. Ph: Reywa 022 254 7620

### Eastern Boating Fishing Club

Enquires: Kerrie Boock 027 358 8769 or Eric Boock (027 686 9939) easternbfclub@gmail.com

### East Otago Creative Artisans

Contact: Reywa Brown 022 254 7620

### East Otago Embroiderer's Guild

Hawksbury Village. New members welcome. Every 1st, 3rd & 5th Wednesday of the month @ 9.30am. President Pearl Stenhouse 021 262 8289

### East Otago Musical Theatre Inc.

President - Dave Keen  
Secretary - Sharleen Snoeck  
Treasurer - Sonya Watson  
eomtproductions@gmail.com

### East Otago Social Bridge Club

RSA 10 Pratt St Waikouaiti  
Bridge is every Wednesday evenings. Please be seated by 6.50pm  
Lessons available. All welcome  
Contact: Secretary EOBridge@outlook.com  
or ph Susan 022 0214 722

### East Otago Woodturners inc.

Thursdays from 1pm to 3pm and a second session on the same day, Thursday, from 6pm to 8pm. Members have access to the clubrooms at any time by arrangement with the club secretary: Lou Tonkin 020 4037 9635

### Kāti Huirapa Runaka ki Puketeraki

Monday - Friday 9am - 4pm. Ph 465 7300

### Otago Eastern District Camera Club

Meet on every 2nd Monday at 7.30pm at the St Mary's Church Hall, Stromness St. Palmerston. New Members welcome. Contact: Tracey Clare 027 245 6424  
eastotagocameraclub@gmail.com

### Palmerston Fibre Arts Collective

Community Centre, Ronaldsday Street, Sundays Between 11am - 2pm  
Bring lunch.snacks  
Contact: Christine 021 061 4485

### The Waitaki Writer's Group

Meetings are held on the second

Monday of every month at 1.30 in the St John Hall, Exe Street, Oamaru. President Chris Stewart on 434 8800

waitakiwriters@yahoo.co.nz

### Volunteer South

The Business Hive, 26 Ribble St Oamaru. On-site Wednesday only, available Mondays & Fridays, 10am to 4pm

Dunedin Community House, 283 - 301 Moray Place, Dunedin

Open Mon-Fri, 10am to 4pm

Contact: Office 03 471 6206

Everyone is welcome to drop in at either location. Email: info@volunteersouth.org.nz

### Waikouaiti Creative Crafts

Hawksbury Village coffee lounge, beside the church

9.20am - 2 pm every 2nd and 4th Wednesday

Ph Cathy 027 201 1463 or Christine 021 235 1883

### Waikouaiti Garden Club

Usually the last Monday of the month @ 7.30pm

John Brown Room, Events Centre  
Phone Christine 027 465 8157

### Waikouaiti Golf Club

Tuesday 10am report. Friday 12.45pm report. Saturday 12.00pm report. Ph 021 663641 or email waikouaitigolf@gmail.com

### Waikouaiti Rodeo Club

Ph Logan Rowland 021 0257 6513.

### Waikouaiti Community Garden

Ph Robin 0274 404 844

## FITNESS AND FUN

### Eastern Rugby Club

Ph Abby Lynch 027 885 5105  
easternrugbyclub@gmail.com

### Hydrotherapy @ Aquasize

Thursday's 9.30am - 10.30am. Moana Gow Pool, Hawksbury. Ph Bev 465 8203.

### Karitāne Bowling Club

Thursday from 4.00pm October - March. Social bowls followed with a \$4 BBQ. Newcomers welcome. Coaching provided. Ph Bob 021 055 8501

### Karitāne Indoor Bowling Club

Winter season only, April - Sept. Tues 1.00pm Karitāne Hall. Come and enjoy social indoor bowls. Contact: Neil 027 220 3033

### Kyokushin Karate

Mon/Thurs 6-8pm, open to all ages & fitness levels, learn self defence, gain confidence & fitness, make new friends & so much more. 1st class free. Waikouaiti Church Hall, Kildare Street. Contact: noah.heath@slingshot.co.nz

### Mecaela Baird School of Ballet

Ph 465 8293 Cell 021 804076  
Email: mstutu2@hotmail.com

### Moana Gow Pool

Corner of Truby King Drive and Kennard Crescent, Hawksbury Village. Ph Jane 027 474 5263  
moanagowpooltrust@gmail.com

### Petanque

Wednesday & Sundays 1.15pm. Ready to play at 1.30pm, Waikouaiti. Ph Anthony 465 7662

### Scottish Country Dancing

Every Tuesday 7.00pm - 9.00pm  
Childrens tutition 7.00pm-800pm  
Clark Hall, Palmerston. Ph Lynne 465 7714.

### Steady As You Go

Wednesday mornings at 10am. If you are interested in gentle exercise and good company for an hour come along. Waikouaiti East Otago Events Centre.

### Tai Chi

St Johns Church Hall Beach St  
Monday 9:30am, intermediate  
Tuesday, 7pm, Advanced  
Thursday, 2:15 pm, Beginners  
Friday, 10am, Advanced  
Contact: Judy Martin  
ratasouthern@gmail.com

### Twilight Tennis

Thursday 6.30pm. Want a game?  
Ph Sarah McMillan  
021 207 2486

### Waikouaiti Indoor Bowling Club

Wednesdays 7-9pm at the EOEC  
Ph. Phil Hammond 465 8157 or Ph. Eva Hammond 465 7790

### Waikouaiti Outdoor Bowling Club

Contact Karen Kelly 0272443646  
or Colleen 465 7558 Club Day  
Thursday 2.00pm

## MEET NEW PEOPLE

### High Tea Project

East Otago Events Centre  
Date advertised in newsletter  
Ph Sonya 027 253 9205

### Lions Club of Palmerston

New members very welcome. 2nd Monday of each month, starting at 6pm, Waihemo Lodge. Ph: Bruce 027 212 7075, Ronald 027 431 1535

### East Otago Bloke's Shed

New members welcome.  
Contact: Neil Kennedy-kennedy.rjneil@gmail.com  
**R.S.A.**  
Meets every Friday from 4.30pm  
Pratt St Waikouaiti. Meet new friends over a meal and a drink in a warm & friendly atmosphere.  
Ph Warren MacLeod 0212679987 or 465-7079. Hall available for hire.

### Waikouaiti/Karitāne Living Alone Group

3rd Wednesday of the month.

12mid-day Outpost Cafe.

Ph Lois 465 7492

## FOR FAMILIES

### Waikouaiti-Palmerston Toy Library

Open Saturdays 12.00 - 1.30

Located at the Racecourse.

Email or just drop in to see what we have to offer parents and grandparents alike. Variety of affordable membership options from \$5 to \$60 and free toy hire of a great range of toys 0-8 years.

### East Otago Buddy

#### Programme

2 hours fun & new experiences weekly for children 5 - 12 yrs old.

Contact Jo 021 268 4780

### Palmerston Playgroup

Coffee group for parents and children (under 5) 10:15 - 11:45 every Thursday during school term at Plunket Rooms, Palmerston Community Centre. Ph. Annabel 027 229 1608 (Community Services Co-ordinator) for more info or just drop in.

### BBMR Motocross

Possible coaching for younger riders. If you are responsible and happy to help with occasional track maintenance, contact Lindsay 021 216 3929

### Waikouaiti Library Hours

Monday - Friday 11am - 5pm  
Saturday 10am - 1pm

### DCC Service Centre Hours

Monday - Friday 11am - 5pm

### Waikouaiti Coast Heritage Centre,

200 Main Road, Waikouaiti.  
Open Wednesday and Thursday 1pm til 4 pm  
Fri, Sat & Sun 10 am til 4 pm  
For research, historical information and tourist information. Gallery and Giftware of local artisans. Phone no. 03 465 7869 or a/h 03 465 8448

### Citizens Advice Bureau Ōtepoti Dunedin

Free confidential information and advice.

We are here for everyone and we are here to help.

Don't know? Ask us.  
03 471 6166 Dunedin Direct  
0800 367 222 Nationwide freephone  
www.cab.org.nz

### To amend your listing or add a new one, contact Rachel:

powa.editor@gmail.com



1 Gill Street, Waikouaiti 9510  
8am to 4.30pm, Monday to Friday  
03 465 7610

**Run 1**  
6.45am Starts run in Dunedin  
9.30am Departs Dunedin to Waikouaiti, Palmerston, Macraes, Ranfurly, Naseby, Middlemarch, Outram and Mosgiel, returning to Dunedin  
*Bookings required by 9am*

**Run 2**  
12noon Departs Waikouaiti for Dunedin  
2.15pm Departs Dunedin for Waitati, Warrington, Karitane, Waikouaiti and Palmerston  
*Bookings required by 2pm*

**Freight Run** Daily Service between Dunedin, Waikouaiti and Palmerston  
*Bookings by arrangement*

## Alan Cooper

Property Consultant

E. alan@cutlers.co.nz  
M. 027 315 5895  
P. 03 467 7277  
709 Great King Street, Dunedin  
[www.cutlers.co.nz](http://www.cutlers.co.nz)



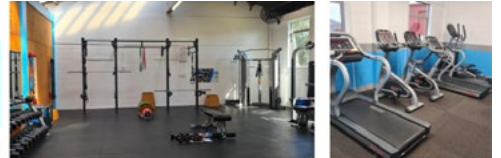
## MOBILE TYRES

DUNEDIN

## DARIN GEORGE

027 461 9977 • sales@mobiletyresdun.co.nz  
[www.mobiletyres.co.nz](http://www.mobiletyres.co.nz)

WE COME TO YOUR HOME OR BUSINESS



Group fitness Classes  
24/7 access to the KM Gym  
Personal Training  
203 Main Road, Waikouaiti

Train on your terms  
Great facility with all the gear. Support and accountability

Katrina McAra 0272526986  
hello@kmfitnessandnutritionnz.com  
[www.kmfitnessandnutritionnz.com](http://www.kmfitnessandnutritionnz.com)



## Paterson Orthodontics

Dr Marguerite Paterson  
Specialist Orthodontist

+64 21 244 9212  
55 Crawford Street, Dunedin  
info@patersonortho.co.nz  
patersonortho.co.nz



"Uphill" Taken by Bruce Dow



## FIREWOOD KING LTD

We deliver from East/  
North Otago to Dunedin  
& Surrounds

Hard wood, soft wood  
and other mixes  
available!

Chopping blocks and  
kindling

See our website for  
options or call us.



Stock up on wood now for winter!  
Call us on 022 125 5236  
Facebook : /Firewood.King1973  
[www.FirewoodKingLimited.com](http://www.FirewoodKingLimited.com)