

## Alan Cooper

Property Consultant

E. alan@cutlers.co.nz

M. 027 315 5895

P. 03 467 7277

709 Great King Street, Dunedin

[www.cutlers.co.nz](http://www.cutlers.co.nz)



Your local food store has just what you need when it comes to shopping for your daily grocery essentials, locally sourced produce, beer/wine and NZ postal services.



Enjoy your shopping with more savings on instore promotions' and everyday low-price deals. please follow us on Facebook page@ **Waikouaiti food center** for latest deals.

### Waikouaiti food center

186 Main road, Waikouaiti 9510

Email: [Waikouaiti.fc@gmail.com](mailto:Waikouaiti.fc@gmail.com)

Ph: 034657164

## East Otago Events Centre

Volunteers have been working hard on the upgrade of the basketball hoops in the EOEC. Both ends are height adjustable for children and adults. If you want something to do with your kids this winter, book an hour and shoot some hoops or grab some friends and play a friendly game.

Thank you very much to WAE who supplied the gear and scaffolding. To Les McAra and John Dempster for all of the hours of labour for getting them up and running. Thanks also to Matua Kelly and Andrew McWilliam for giving up your time to assist in this project.



## Spring Show Returns

After a hiatus of two years the Waikouaiti Spring Show is set to return. Held in conjunction with the Community Fete the show will be held on **Friday 9th and with the Fete on Saturday 10th September**.

Reference to a Spring show in Waikouaiti, originally run by the Presbyterian Church dates back to at least 1917 and possibly longer. A real institution in the community. Although now run by the Waikouaiti Garden Club the committee welcomes any help and input from the wider community.

Cut flowers and of course daffodils are the feature followed closely behind with the handcrafts and children's entries. The organisers are hoping for a big display in handcrafts after the lockdowns and periods of isolation forced upon us by Covid the past two years.

Schedules will be available through the usual outlets and on-line shortly. The organising team are hoping for a brilliant display to welcome spring and show the visitors that we are heading back to some form of normality.

*Stuart Brown*



## POWA COMMUNITY NEWSLETTER

AUGUST 2022 ISSUE [www.waikouaiti.co.nz](http://www.waikouaiti.co.nz)



## POWA Goings and Comings



### Incoming Chairperson Kath Ryan

POWA Committee member Kath Ryan was unanimously elected as the Chair. Kath has known the Waikouaiti area for over 50 years having first lived in her current house when it was the family crib. Kath's career as a Pharmacy Academic has taken her around the world, living and working in various countries for extended periods. For the final 20 years of her career Kath worked at Otago University. She is passionate about this area and loves gardening, reading, cycling and is a founding member of the famous boogie boarding Silver Selkies.

Kath will carry forward the existing POWA projects. She's keen to support local initiatives like the Blokes Shed, beautify our public spaces and explore how to get funding for local groups with good ideas. In terms of building a strong community, Kath's key principles are 'resilience', 'inclusiveness' and 'diversity' and these values will guide decisions made during Kath's tenure. Finally, Kath has a challenge: "What do you want the Waikouaiti and Karitane area to look like in 50 years? And, how will you contribute to this?"

### Outgoing Chairperson Judy Martin

At the recent AGM, our capable Chair Judy Martin stepped down after two challenging years to devote more time to her OneCoast duties.

The Committee is grateful to Judy for the many hours that she devoted to POWA activities and relieved that she is staying on as a POWA Committee member.

Among the many on-going projects during Judy's tenure, POWA provided the picnic tables near the Waikouaiti beach, managed the annual Quiz Night with the local Fire Brigade to raise funds for Leukemia Research, put on regular High Teas for newcomers and people who live alone, repaired the skate park, established a Community Garden and the new Movie Day for the kids (but don't mention lead in the water ....).

POWA took over an important initiative, the Food Bank and Judy, with the POWA team, worked on the community's response to the Covid crisis. During lockdown, Judy started the Waikouaiti Community Care Facebook page and this useful page is still operating. Judy is a member of the Community Response Group and help POWA form Phew! Who can follow these impressive achievements?

*Catherine Robinson*







**Skevali Hair Studio**  
*Inspire Create Refine*

11 Mount Street  
Waikouaiti  
Otago  
Ph: 03 2620029

Alisha Skevington  
Qualified Hairdresser Not taking new clients at present

## Waikouaiti Indoor Bowls Club

Apart from one evening when the weather was particularly unpleasant, the Waikouaiti Indoor Bowls Club has continued to meet in the Events Centre auditorium as usual on Wednesday evenings from 7.00-9.00pm. We are currently trying to get through our season's programme and successfully completed the competition for affiliated Triples. Those were won by M. Lind, J. Scobie and G. Hight and they will go forward to the Championship event in Oamaru this month. Some of our members were asked to play for North Otago in games which took place in Ashburton, Dunedin and Timaru, all in July which was a very busy month for us!

We have an excellent venue for indoor bowls with lovely facilities and possibly the best floor in Otago. Come along before 7.00pm on a Wednesday for a friendly reception and an enjoyable game – we don't take ourselves too seriously and there is plenty of chat and laughter. Your first night is free, membership of the club is only \$15 for the season and \$3 each evening.

**For more information, please contact Phil on 027 358 3697 or Eva on 465 7790**

## RCJ MOWER SERVICES

92 Thomas Street, Waikouaiti  
Russell Jenkinson  
Phone: 021 167 9646

**Repairs and Servicing to Lawn Mowers including Ride-ons and also Chainsaws.**

**Chainsaw sharpening, new chains, parts and accessories**  
**Fast, friendly service**  
**" Free pickup and delivery Waikouaiti area only"**

## Hawksbury Lagoon Committee

The move to protect and improve the water quality of our waterways is a current major focus. The major ecological importance of wetlands in particular have only recently been recognised. Past generations and authorities saw these as wastelands and so we have inherited rubbish dumps, sewerage schemes sited in wetlands and other degradation through human activity. This has meant that the majority of wetlands in Aotearoa/NZ require remediation and this is our inheritance here in Waikouaiti and Karitane. A national scheme for the monitoring of estuarine and waterway health is coordinated nationally and managed through regional councils. Under this scheme 3 assessments are made to indicate wetland health: mud content of bottom surface layers, contaminants (toxic metals like copper, lead, zinc and cadmium; hydrocarbons and pesticides) and microflora (worms, snails, shell fish etc). The ORC undertakes this monitoring at the estuary of the Waikouaiti river at Karitane and results can be seen on the Land, Air, Water Aotearoa (LAWA) website.

At the Hawksbury Lagoon, water quality monitoring has been undertaken through different research and ecological consultations – see <https://www.hawksburylagoon.org.nz/resources>. The Dunedin City Council also monitors a waterway running adjacent to the current transfer station but these results are not easily accessible. Pesticide and hydrocarbon monitoring has not been undertaken but this is something the committee will be considering. For further information see: <https://www.lawa.org.nz/>

There was also an interesting interview on National Radio 22.7.22 by Jesse Mulligan of a LAWA scientist, see:  
The health of NZ's estuaries now online | RNZ

### Creature of the Month – Warou/welcome swallow

Warou are found throughout Aotearoa/NZ but not in dense bush and alpine areas, they tend to concentrate near wetlands. These little birds are considered to have been blown here from Australia, possibly on their seasonal migration between Tasmania and mainland Australia. They were first recorded in Northland in the 1920's, but are not known to have bred here until the 1950's after that, spreading down the country. They are fully protected as a native species.

Wahou feed on insects often catching them in flight. They also drink while skimming the water surface. During winter they can travel long distances to camp near a reliable food source; Otago is one of their preferred sites for overwintering. They are vulnerable to storms so our recent weather may have reduced the local population.

During spring and summer wahou build nests of mud and grasses hanging off upright surfaces on bridges, houses, sheds etc. If nests are left undisturbed they can return to these year after year.

For further information see:  
<https://nzbirdsonline.org.nz/species/welcome-swallow>

**Ruth Ferguson for the Hawksbury Lagoon Committee**



**TREEHAUS**  
LANDSCAPES  
& TREECARE

0274808179  
WWW.TREEHAUS.CO.NZ  
Choose to create a better place



**Better.**

Branding . Printing Projects  
Web Design . Digital

**bettercreative.nz**

## Classified and community notices (for non-profits)

### Meet new people

#### Euchre

Every Friday St Johns Hall Beach Street 1.30-4pm. Contact: John Pearce 021 116 3936 or Dick King 465 7566

#### High Tea Project

East Otago Events Centre  
Date advertised in newsletter  
Ph Sonya 027 253 9205

#### Lions Club of Palmerston

New members very welcome. 2<sup>nd</sup> Monday of each month, starting at 6pm, Waihemo Lodge. Ph: Bruce 027 212 7075, Ronald 027 431 1535

#### Men's Shed

New members welcome.  
Contact: Neil Kennedy - [kennedy.rjneil@gmail.com](mailto:kennedy.rjneil@gmail.com)

#### R.S.A.

Meets every Friday from 4.30pm Pratt St Waikouaiti. Meet new friends over a meal and a drink in a warm & friendly atmosphere. Ph Warren MacLeod 0212679987 or 465-7079. Hall available for hire.

#### Waikouaiti Community Garden

Contact: Robin Mutch 0274 404 844

#### Waikouaiti/Karitane Living Alone Group

3<sup>rd</sup> Tuesday of the month. 12mid-day Outpost Cafe.  
Ph Lois 465 7492 or Joan 465 7728.

### For Families

#### Waikouaiti-Palmerston Toy Library

Open Saturdays 10.30 - 12.00  
Located at the Racecourse.  
Email or just drop in to see what we have to offer parents and grandparents alike. Variety of affordable membership options from \$5 to \$60 and free toy hire of a great range of toys 0-8 years.

#### East Otago Playgroup

Coffee group for parents and children (under 5) 9.30 – 11.30 every Wednesday during School Term at Waikouaiti Plunket Rooms, East Otago Events Centre. Ph. Annabel 027 2291 608 (Community Support Coordinator) for more info or just drop in.

#### Te Kakano “Free” Nurse Led Clinic

Held monthly at Puketeraki ki Huirapa Marae  
Contact Tumai Ora Whanau Services 4657651  
Or KTKO Ltd 4770071

### Try Something New

#### East Otago Buddy Programme

2 hours fun & new experiences weekly for children 5 - 12 yrs old. Contact Jo 021 268 4780

#### East Otago Creative Fibre (Spinners & Weavers)

1<sup>st</sup> Thursday of the month, 10am – 2pm. St John's Church Hall, Beach St, Waikouaiti. All welcome. Ph: Pam Sinton 021 02745979 or Judy Watson (03) 465 1178

#### East Otago Art Group

Meet fortnightly at 10am - 2pm. St Johns Church, Beach Street. All welcome.  
Ph: Reywa 022 254 7620

#### Eastern Boating Fishing Club

Enquires: Kerrie Boock 027 358 8769 or Eric Boock (027 686 9939) [easternbfclub@gmail.com](mailto:easternbfclub@gmail.com)

#### East Otago Creative Artisans

Contact: Reywa Brown 022 354 7620

#### East Otago Embroiderer's Guild

Hawksbury Village. New members welcome. Every 1st, 3<sup>rd</sup> & 5<sup>th</sup> Wednesday of the month @ 9.30am. President Pearl Stenhouse 021 262 8289

#### East Otago Musical Theatre Inc.

President – Louis Smith  
Secretary – Sharleen Snoeck  
Treasurer - Sonya Watson  
03 465 1401

#### East Otago Social Bridge Club

RSA 10 Pratt St Waikouaiti  
Bridge is every Wednesday night . Please be seated by 6.50pm  
Lessons available  
All welcome  
Contact:Prue Gilbert 465 8496

#### East Otago Woodturners inc.

Every Wednesday at 7:30pm.  
Contact Lyn Trusler 4651 511 or 027 296 8711, or Lou Tonkin 020 4037 9635

#### Fibrecraft Fridays

5.30pm until about 7.30pm at The Wool Store and More, Main Road Waikouaiti.  
Contacts: Ruth 021 1130 719 or Sandy 021 631 793

#### Kati Huirapa Runaka ki Puketeraki

Monday – Friday 9am – 4pm. Ph 465 7300.

#### Movement to Music

St Johns Church, Beach St, every Tuesday 10 am,  
Contact :  
Lynne Holden 03 4658413 or 021 071 5562.  
Gold coin drop in.  
New members welcome.

#### Otago Eastern District Camera Club

Meet on every 2nd Monday at 7.30pm at the St Mary's Church Hall, Stromness St.Palmerston. New Members welcome.  
Contact: Tracey Clare 0274 533 230  
[eastotagocameraclub@gmail.com](mailto:eastotagocameraclub@gmail.com)

#### The Waitaki Writer's Group

Meetings are held on the second Monday of every month at 1.30 in the St John Hall, Exe Street, Oamaru. President Chris Stewart on 434 8800  
[waitakiwriters@yahoo.co.nz](mailto:waitakiwriters@yahoo.co.nz)

#### Volunteer South

The Business Hive, 26 Ribble St Oamaru. On-site Wednesday only, available Mondays & Fridays, 10am to 4pm  
Contact: Julia 027 237 9304  
Dunedin Community House, 283 - 301 Moray Place, Dunedin  
Open Monday - Friday, 10am to 4pm  
Contact: Office 03 471 6206  
Everyone is welcome to drop in at either locations. Email: [info@volunteersouth.org.nz](mailto:info@volunteersouth.org.nz)

#### Waikouaiti Creative Crafts

Hawksbury Village coffee lounge, beside the church  
9.20am – 2 pm every 2nd and 4th Wednesday  
Ph Cathy 027 201 1463 or Christine 021 235 1883

#### Waikouaiti Garden Club

Last Monday of the month @ 7.30pm. Waikouaiti Events Centre, Supper Room. Ph Stuart Brown 465 7646

#### Waikouaiti Golf Club

Tuesday 10am report. Friday 12.45pm report. Saturday 12.15pm report. Ph 465 7129 or email [waikouaitigolf@gmail.com](mailto:waikouaitigolf@gmail.com)

#### Waikouaiti Rodeo Club

Ph Logan Rowland 021 0257 6513.

#### Waikouaiti Community Garden

Ph Robin 0274 404 844

### Fitness and Fun

#### Eastern Rugby Club

Ph Abby Lynch 027 885 5105  
[easternrugbyclub@gmail.com](mailto:easternrugbyclub@gmail.com)

#### Hydrotherapy @ Aquasize

Thursday's 9.30am – 10.30am.  
Moana Gow Pool, Hawksbury. Ph Bev 465 8203.

#### Karitane Bowling Club

Thursday from 4.00pm October – March. Social bowls followed with a \$3 BBQ. Newcomers welcome. Coaching provided. Ph Bob 021 055 8501 / Shelley 465 1404

#### Karitane Indoor Bowling Club

Winter season only, April – Sept. Tues 1.00pm Karitane Hall. Come and enjoy social indoor bowls. Contact: Neil 4658184 or Murray 465 7363.

#### KM Fitness and Nutrition KM Gym

203 Main Road, Waikouaiti (behind the Events Centre)  
24/7 access. Contact: [katrinamcara@gmail.com](mailto:katrinamcara@gmail.com)  
Katrina McAra 027 252 6986

#### Kyokushin Karate

Mon/Thurs 6-8pm, open to all ages & fitness levels, learn self defence, gain confidence & fitness, make new friends & so much more. 1<sup>st</sup> class free.  
Waikouaiti Church Hall, Kildare Street. Contact: [noah.heath@slingshot.co.nz](mailto:noah.heath@slingshot.co.nz)

#### Mecaela Baird School of Ballet

Ph 465 8293 Cell 021 804076  
Email [mstutu2@hotmail.com](mailto:mstutu2@hotmail.com)

#### Moana Gow Pool

Corner of Truby King Drive and Kennard Crescent, Hawksbury Village. Ph Jane 027 474 5263  
[www.moanagowpooltrust@gmail.com](mailto:www.moanagowpooltrust@gmail.com)

#### Petanque

Wednesday & Sundays 1.15pm. Ready to play at 1.30pm, Waikouaiti. Ph Anthony 465 7662.

#### Scottish Country Dancing

Every Tuesday 7.00pm – 9.00pm  
Childrens tutition 7.00pm-800pm  
Clark Hall, Palmerston. Ph Lynne 465 7714.

#### Stadium Sports

KM Fitness & Nutrition  
Fitness Classes  
Mon 9.15am and 7pm, Thurs 7pm Fri 6am  
Taste Success wholefood eating programme's also available  
[ph Katrina 027 252 6986](mailto:ph Katrina 027 252 6986)

#### Steady As You Go

Wednesday mornings at 10am. If you are interested in gentle exercise and good company for an hour come along. Waikouaiti Events Centre.

#### Tai Chi

*East Otago Events Centre*  
Monday 10am (Intermediate) at St John's Church Hall  
Monday 10am (advanced)  
Tuesday 7pm (advanced)  
Thursday 10:30am - not 1st Thurs of month (Intermediate)  
Thursday 2pm (Beginners)  
Friday 9:30 and 10:45 (advanced)  
Phone Joy Justice 465-8313

#### Twilight Tennis

Wednesday 6.30pm. Want a game? Ph Sarah McMillan 021 207 2486

#### Waikouaiti Indoor Bowling Club

Wednesdays 7-9pm at the EOEC  
Ph. Phil Hammond 465 8157 or Ph. Eva Hammond 465 7790

#### Waikouaiti Outdoor Bowling Club

Contact Eva 465 7790 or Colleen 465 7558  
Club Day Thursday 2.00pm

#### Waikouaiti Yoga

East Otago Events Centre  
Tuesday's 6.30pm - 7.30pm  
Thursday's 6.30pm - 7.30pm  
Contact: Nicola 021 0862 0140  
RYT: IYTA NZ

## COMMUNITY WORKERS REPORT

**Are you self isolating?**  
**We can get you the help you need.**



**We're here to provide support for people affected by COVID-19**

Covid-19 is still circulating widely in the community, and the re-opening of our borders may bring more influenza and other respiratory illnesses to our communities. **Keep up those healthy habits** – Wear a face mask when on public transport, in indoor settings like retail stores and supermarkets, when in poorly ventilated spaces or when it is hard to physically distance from other people. Maintain good hand hygiene by washing and drying your hands thoroughly or using alcohol based hand sanitiser. **Get winter ready** – Develop a winter plan for your whanau so family members know what to do if people become unwell. Get your kit together, this might include painkillers, a thermometer, tissues, cold and flu medications, enough food for a few days, pet food and stock up on regular medicines your whanau will need. We have a few items such as masks, sanitiser and RAT tests available at no charge from the POWA office.

**Holiday Programme Movie Day** – Thanks to everyone who attended the inaugural movie day. A total of 50 tamariki, mums and grandparents attended the two screenings. We are planning to run a big screen movie one afternoon each school holidays from now on.

**Driver Feedback Sign** – Good things come to those who wait! And yes we have been waiting. In July Waka Kotahi installation a Driver Feedback sign at the north end of Waikouaiti, just beside the Waikouaiti School. This location ensures drivers acknowledge their speed and slow down before driving past the school and shopping area. Thank you to everyone who signed the POWA petition asking for this to be a priority, it's taken work and a long time, but we got there. Big thank you to the Waikouaiti Coast Community Board for all the work they provided through the Land Transport plan and numerous meetings to get this over the line. Now we just need to work on the Southern end of town.

**Sonya**

## EDITORS REPORT

It's been nearly 16 years since I produced my first newsletter and now 176 newsletters later, it is time to hang up my keyboard and let someone enjoy the job.

The role is advertised opposite and I encourage anyone who is looking for a 10 hour a week job to have a go. I have enjoyed meeting so many locals over the years, hearing their stories and being able to share them with my community.

This will be a position I will sorely miss, but as my Community Worker role develops I feel its the right time to say poroporoaki. **Sonya**

## KEY SERVICES AVAILABLE

- Carpentry
- Plumbing
- Labourers
- Painting
- Electrical
- Ground Maintenance

**One call**  
*We do it all*

**PHOENIX**  
 SERVICES DUNEDIN LIMITED

1 Lorne Street, South Dunedin  
 PO Box 2507, Dunedin 9044  
 P (03) 481 1999  
 E dunedin@phoenixdunedin.co.nz  
 www.phoenixdunedin.co.nz

## Indulgence Rural Retreat

89 Goodwood Rd, Palmerston

**Beauty Therapy & Skin Care**  
 Lash & Brow Treatments Waxing

**Facials, Manicures, Pedicures**  
 Facial Peels  
 Anti-aging – Micro needling

**Massage**  
 Therapeutic & Relaxation

**Sheryl Popham**  
**Ph: 027 221 9392 or 03 465 1430**

**Craig Baird and Sue Black**  
**EAST OTAGO CREWCUT**  
**027 932 0951**

**They do:**  
**Lawn mowing, Hedge trimming**  
**Section tidies, Spraying, Tree work**



## SITUATION VACANT - EDITOR

We currently have a vacancy for an Editor to produce the POWA Newsletter and to provide editorial support for our website and social media. This is a paid, fixed-term contract for 10 hours per week.

## About your new role:

- Source, write and edit well-crafted, high-quality news and feature content for articles, newsletters, social media and website content.
- Produce 11 monthly newsletters per year, providing accurate and up-to-date information relevant to local residents.
- Produce an annual Community Directory.

## About you:

- Demonstrated ability in writing and editing; excellent verbal communication skills.
- Professional behaviour and ability to manage tight deadlines.
- Ideally have experience with interviewing and working closely with your community.
- Live locally and have legal authorisation to work in New Zealand.

A job description can be obtained by emailing powa.ed@gmail.com or calling into the POWA Office in the East Otago Events Centre.

Applications, including a CV and Cover Letter, must be emailed to POWA (powa.ed@gmail.com) by 26<sup>th</sup> August.

## PEWS NEWS

## Presbyterian Parish of Waikouaiti-Karitane

August 7 10am Communion Service at Karitane Church led by Rev Hilary Oxford-Smith

August 14 10am shared Communion Service at St John's Anglican Church

August 21 10am Service at Karitane led by Robertson family

August 28 10am Service at Waikouaiti Church, Kildare Street

St Annes Catholic Church  
CATHOLIC SERVICES  
TIMETABLE

Palmerston - Blessed Sacrament 12pm, 1st Sunday of the month.  
 Waikouaiti - St Anne's 12pm, 2nd, 3rd, 4th & 5th Sunday of the month

## Anglican Church

August 7 10am join Presbyterian

August 14 10am with Rev Juan Kinnear

August 21 10am reserved Sacrament

August 28 10am Reserved Sacrament

## Hawksbury Christian Fellowship

Services at 10am every Sunday at Hawksbury Village Chapel

Also weekly bible study groups, ladies' group, and monthly men's breakfast. All welcome. For more information contact: Rodger & Ruth Mangai 021 126 5775 or Peter & Thelma Arnott, (03) 465-7898.

## What do you stand for?

If you're keen to make a difference, now could be the time to stand for council.

The Dunedin City Council is encouraging people with an interest in the city and its future, to consider standing in the October local body elections.

Nominations are open and close at noon on Friday, 12 August.

People interested in standing are encouraged to come along to an information evening being held later this month. This is a chance to learn more about what councils do, the work involved and what the rules are around nominations and campaigning.

The candidates' evening will be held at Toitū Otago Settlers Museum on Wednesday, 27 July at 6pm. Speakers will include representatives from the DCC and the Otago Regional Council.

"Local body elections are an opportunity for people who are passionate about their community, and who have strong leadership skills, to put their name forward and help shape the direction of our city."

Those wishing to stand for election must be New Zealand citizens and be on the electoral roll. They must be nominated by two people who live in the area in which they want to stand and they must pay a \$200 deposit.

Postal voting is used for local body elections. People need to be enrolled by 12 August to receive their voter packs, which will be mailed out from 16 September. Voters must return their voting papers by noon on 8 October (election day) to ensure their votes are counted.

## Waikouaiti Coast Community Board : 2019 -2022

|                              |                         |              |
|------------------------------|-------------------------|--------------|
| Alasdair Morrison, Chairman  | info@calmarine.co.nz    | 0274 354 384 |
| Geraldine Tait, Deputy Chair | gersftait@gmail.com     | 021 217 5492 |
| Andy Barratt                 | asbarratt@gmail.com     | 021 890 048  |
| Sonya Billyard               | powa.ed@gmail.com       | 027 253 9205 |
| Mark Brown                   | blueskin@xtra.co.nz     | 021 169 2303 |
| Mandy Mayhem-Bullock         | mayhem2u@yahoo.co.nz    | 021 919 555  |
| Jim O'Malley, DCC Councillor | Jim.OMalley@dcc.govt.nz | 021 525 547  |

**Palmerston Dental Surgery Ltd**

## New patients welcome

Our team of qualified experienced dental surgeons & hygienist are committed to making your visit comfortable. Providing the highest quality dental care for your family.

- Evening & Saturday appointments
- ACC registered provider treatment
- Free dental care for under 18 years

**Call today for your appointment**

Waihem Service Centre (Library Building)  
 54 Tiverton Street, Palmerston 9430  
 Tel: 03 465 1591  
 After hours: 027 4812 491

**FOLEYS**

ABOVE & BEYOND  
 EVERY TIME

Plumbing, electrical,  
 gasfitting and drainlaying.

**Call 0800 30 35 30**  
**or foleys.co.nz**

**Dressmaker**  
 on Main

## EXPERIENCED DRESSMAKER

who thinks outside the square

by appointment only

phone Lesley 021 156 9262



Take a stroll around the Anglican Church in Beach Street anytime.



## LANDSLIDES

This month we are looking at Landslides. The likely impact in our region occur with severe rainfall weather conditions. They can be initiated on slopes already on the verge of movement by rainfall, snowmelt, changes in water level, erosion, change in ground water, earthquakes, disturbance by human activities, or any combination of these factors.

What can you do; get out of the path of the landslide quickly. Warn and help whanau and take your emergency grab bag and pets with you if you can do so quickly. Stay informed and connected, if possible, by using social media, phone, mobile, alternative communication (radio/TV) and listen to your local radio stations. Listen and follow official guidance from Civil Defence Emergency Management and your Community Reponse Group.

## WAIKOUAITI COAST HERITAGE CENTRE

This important, historic picture, painted in 1888, is by George Fodor (1860?-1930). It depicts the death of Major Gustavus Ferdinand von Tempsky on the 7th September 1868 during an assault at Te Ngutu-o Te-Manu, Chief Titokowaru's south Taranaki Pa. He was forty at the time of his death.

Tempsky was a Prussian adventurer, writer, artist and soldier who had become somewhat of a folk hero to the European settlers. He was one of the commanders of the legendary Forest Rangers, a small elite irregular corps that fought during the New Zealand Wars. As a sign of respect Titokowaru ordered that von Tempsky's body be placed onto a funeral pyre in the centre of the marae. Local Maori returned his sword sheath to his widow.

Come and view it for yourself in the Kay and Bill Lang Gallery here at the new Heritage Centre. It is one of many fascinating objects on view. We also boast a research area and a well-stocked gift shop. If you have a bit of time to spare, a tour of the historic BNZ Bank building wouldn't disappoint either. Our opening hours are Wednesday, Thursday 1-4pm and Friday, Saturday, Sunday 10am-4pm.

The Waikouaiti District Museum Society is having their AGM on Saturday 27th August at 2pm. Nick Dickson, Otago Area Manager for Heritage New Zealand, will be our guest speaker, followed by afternoon tea. Everyone welcome.  
**Bev Medlin (Secretary)**



## METHODIST MISSION SOUTHERN

Sustaining Tenancies is a support programme for people who are struggling to hold onto the lease for their home. Sustaining Tenancies covers anyone renting in Dunedin area either from private, community, or public landlords. They can help renters with the rising cost of power, homelessness due to a fire, difficulties pulling together a bond, the change in family finances and sudden rent increases. Anyone can make a referral. POWA has referral forms available at the office.



# KEA TREEWORXS

*Certified Arborists*

Tree Pruning - Removals - Chipping

For all your tree maintenance needs contact Kea Treeworks today!

Chris 027 484 3395 Jack 021 582 300  
keatreemail@gmail.com  
keatreeworks.co.nz

**Do you have a fallen tree after all this crazy weather?**

**Do you need trees carefully felled?**

**We are interested in timber quality trees to mill – Macrocarpa, Douglas Fir, Cedar, Cyprus. Cash Paid.**

**For assessment call Gavin on 027 222 1798**

**OFF THE MILL  
Portable Sawmilling  
Waikouaiti**

## Waikouaiti Bowling Club

The Waikouaiti (Outdoor) Bowling Club is currently in the off-season and expects to resume in September. Our first meeting will as usual be a pre-season one in early September to arrange for any repairs or maintenance tasks etc. and to check out our forthcoming programme in anticipation of an enjoyable season.

We do not usually have monthly meetings during August so our next meeting is planned for Thursday 8th September at 2.00pm when we will decide the date of our opening day. Waikouaiti Club is the official host club for Eastern Districts for the next two years and we look forward to the challenge. We are a 'dry' venue but going by the number of our members who are there for the bowls not the 'booze', it has certainly not held us back!

**For Club information contact the Secretary, Eva Hammond. Phone 465 7790**

## HAPPY DAYS RADIO IS FOR YOU

On the 4<sup>th</sup> of July this year Happy Days Radio 88.3 FM turned five years old. In that time our volunteer staff have worked hard to provide a top quality service to the community with the emphasis on attempting to reach out to people and bring everyone together with our special programmes. These include giving our local schools the opportunity to conduct their own shows and to let everyone know what they are doing. This also gives primary and secondary students the opportunity to showcase their individual and collective talents. A studio has been built at the East Otago High School where in time all schools and individuals will come to and broadcast their own programmes. We want to not just entertain but to also educate and inform.

It is hoped to establish a studio in Waikouaiti where locals can broadcast their own programmes on a rostered basis. If you are interested in this exciting venture please leave your contact details with Sonya at POWA and we will get back to you.

At our expense and with the generosity of the Waikouaiti RSA and Vet Life a transmitter and antenna has been installed at the RSA building in Pratt Street to provide a service to Waikouaiti, Karitane and Hawkesbury townships. Those people who can not receive our signals on 88.3 FM can listen on line at [www.happydaysfm.com](http://www.happydaysfm.com).

With the ongoing support of POWA we look forward to serving you.

**Lawrence McCraw,  
FOUNDER OF HAPPY DAYS RADIO.**

## WAIKOUAITI COAST HERITAGE CENTRE

The Waikouaiti Coast Heritage Centre is getting a makeover this month. New/old display cases on long-term loan from Toitu Museum are replacing our current modern looking display cases. We are thrilled with them, they will change the whole ambience of the heritage display area. When we get additional funding, we intend to make further changes, adding new lighting and dioramas etc to make it an exciting place to learn more about the history of our area. The gift shop and gallery continues to have new items for sale, this month we have just received four new children's books by Jo Carson-Barr, they are beautifully written and illustrated New Zealand stories. Don't forget Father's Day is also fast approaching (Sept 4th) and we have some great ideas for the man in your life, as well as items to help these miserable winter days seem a little bit brighter.

On Tuesday September 6th from 7-9pm Kate Mossman will facilitate a workshop on working with beeswax. Learn how to make waxed wraps, and beeswax candles. Cost is \$35, application forms are at the Heritage Centre or by emailing [admin@wchc.org.nz](mailto:admin@wchc.org.nz).

If you'd like to find out more about us and our future plans do come along to our AGM at 2pm on August 27th. Our guest speaker is Nick Dixon, the Area Manager for Heritage NZ, he will undertake a presentation on the role of Heritage NZ. Everyone is welcome to then stay and join us for afternoon tea. The Heritage Centre is OPEN Wednesday and Thursday 1pm – 4pm, Friday, Saturday and Sunday 10am – 4pm.  
**Shirley McKewen, Chairperson**



**HAPPY DAYS RADIO 88.3 FM.**

YOUR TRUE LOCAL RADIO STATION,  
THE BEST MUSIC AROUND,  
NEWS SPORT & WEATHER,  
COMMUNITY INFORMATION,  
REACHING OUT TO YOUR COMMUNITY,  
PRIZES & GIVEAWAYS,  
LISTEN TO OUR LOCAL SCHOOLS ON THE AIR.

**MAKE THE SWITCH TO 88.3 FM**

[www.happydaysfm.com](http://www.happydaysfm.com) facebook: happy days 88.3 fm

Find us on Google!  
**Puketapu Radio 756AM**



**Puketapu  
Radio756am**

- ☒ Waihemo Museum
- ☒ Information
- ☒ Souvenirs
- ☒ Giftware
- ☒ Second Hand Books



**WORKING TOGETHER**

*Found your dream home? Need to sell your own?*

**LET US HELP YOU MAXIMISE THE VALUE OF YOUR PROPERTY & ACHIEVE YOUR GOALS FASTER.**

**Leanne Black** Licensed Salesperson  
027 552 5502  
[leanne.black@raywhite.com](mailto:leanne.black@raywhite.com)

**Brian Greer** Mortgage Adviser  
0274 710 108  
[brian.greer@loanmarket.co.nz](mailto:brian.greer@loanmarket.co.nz)

**Jacqui McFadgen** Mortgage Adviser  
0274 880 494  
[jacqui.mcfadgen@loanmarket.co.nz](mailto:jacqui.mcfadgen@loanmarket.co.nz)





### Community based non-profit Childcare Centre

Welcomes children and their families/whānau from zero to six years for education and care.

Our opening hours are 7am to 6pm Monday to Friday.

We provide the government funded 20 hours for three and four year olds, WINZ subsidies are also available. You and your family/whānau are very welcome to visit our centre to meet the staff and have a look around.

5 McGregor Street, Waikouaiti  
Ph: (03) 4657 319  
www.bigsteps.co.nz

Welcome to the Waikouaiti Volunteer Fire Brigade report. From the writing of last month's report to this month's report we have had 16 calls for the month.

- MVA x 1
- Fire x 6
- Weather events x 5
- Medical x 2
- PFA x 2



### Personal update

We are 3 short for our full muster, if you are keen to come along and have a chat and a look around the station then please pop along on a Wednesday night.

### This month's safety tip:

Do a fire check every night before you turn out the light!

- Are the kitchen appliances turned off and safe.
- Are the heaters turned off? And make sure all furniture and clothes are one metre or more distance from the fireplace.
- Has the ashtray been emptied into a metal bin outside?
- Has the TV been switched off using the power switch on the set and not the remote control 'standby'?
- Are all candles out?
- Are kitchen and living room doors closed to slow a fire spreading to bedrooms?
- Is the house secure with keys in the deadlocks?
- Are passageways clear for a quick escape?

### Smoke alarms

Waikouaiti Fire Brigade can supply and install smoke alarms into your home or rental property (it is law that all rental properties have working smoke alarms). Please give us a call on a Wednesday night to see which alarm would suit your home. We still have a supply of smoke alarms that we are installing into certain homes free of charge, please give us a call on a Wednesday night to see if you fit the criteria as it would be great to see every home in our area have working smoke alarms.

### Are you prepared for an emergency?

Visit <https://getready.govt.nz/>  
<https://www.civildefence.govt.nz/get-ready/prepared-for-an-emergency>  
<https://otago.getsready.net>  
Until next month stay safe and remember in an emergency dial 111 and ask for the service you require Police, St Johns, or Fire.

David McLeod, Chief Fire Officer Waikouaiti

**UPCOMING**

**EVENT**

**CALLING ALL STALL HOLDERS**

**REGISTER NOW**

**SEPTEMBER 10TH, 2022**

**COMMUNITY FETE**

Email:  
**[powa.ed@gmail.com](mailto:powa.ed@gmail.com)**

## ONECOAST RESOURCE RECOVERY

A huge thank you to you all for making our Clothes Sale and Slow Fashion Fair such a success. To all the donors and clothes buyers, volunteers and demonstrators, you helped us earn \$500 each for OneCoast and our Palmerston neighbours Waihem Wastebusters to put towards our efforts to rid our communities of waste.

For OneCoast, it will be part of our funding to raise a shelter between our two containers at the Transfer Station, which will mean that we will be able to accept larger items like quality furniture and building supplies. Thanks to this latest effort we are almost there! In the meantime we continue to be open between 1:30 and 3:30 on Sunday afternoons.

Our Main Street office is currently closed while we seek funding to re-employ our part time facilitator.

### Community Board Update

Well here we are – the end of another Triennium – one that was dominated by three words : Covid; Lockdown; Zoom : all rather frustrating and unwelcome. In spite of this, we did manage to accomplish many things.

From our Discretionary Fund we were able to provide financial assistance to the following:

Waitati Volunteer Fire Brigade; Waitati Music Festival; Waikouaiti Community Garden; Waikouaiti District Museum; Blueskin News; POWA; Waitati Hall Society; Otago Blue; Memorial to Joel Vanderburg; Hauteruruku ki Puketeraki; Waiputai Trust; Hawksbury Lagoon Inc; Waitati School; East Otago Events Centre; Waikouaiti Rodeo Association; One Coast; Blueskin A & P Society; Blueskin AED; Waikouaiti District Museum; Karitane Bowling Club; East Otago Blokes Shed; Waikouaiti District Pony Club.

Throughout the year we deal with many requests from our community, and much of what we do 'flies under the radar' and we don't seek publicity for these. There are many issues around roads, footpaths, vegetation, trees, consents, etc. and we just attend to them as they arise, always liaising with appropriate DCC Staff.

There have been some notable exceptions – who can forget the issue of 'lead in the water' which became a major item on TV and radio for a while. It almost seems like a distant memory. After many years of lobbying, we finally got a weekend bus service for our area.

There will likely be some tweaks required to the timetable, but the new service seems to be well received in the community.

It is pleasing that we have individual Board Members representing us with their involvement in many aspects of life in our community. We have Mark and Andy pushing ahead with the upgrade of the Truby King Recreational Reserve. Sonya and Mandy are very active in the area of FENZ (Civil Defence). Geraldine and Andy represent us with great work that is being achieved by One Coast – led by local resident Judy Martin. Mark keeps abreast of progress with the re-planting of the dunes along Matanaka Drive in Waikouaiti and liaises with the local contractors. Andy has been busy lately with many issues around Karitane Harbour. Mandy keeps us up to date with all that is happening with 'Keep Dunedin Beautiful'. Sonya keeps a close eye on many issues around Waikouaiti. Andy is our representative on the Moana Gow Pool Committee. Geraldine is the eyes and ears of all that happens in Warrington. Mark and Mandy keep a close eye on issues in Waitati and the wider Blueskin Bay area.

There isn't enough space in this publication to go into great detail about all of our activities, so I'll just close by saying thank you to our Board Members. We have had a good team this past three years.

**Alasdair Morrison,**  
Chairman  
**Waikouaiti Coast**  
**Community Board**  
**[info@calmarine.co.nz](mailto:info@calmarine.co.nz)**  
**0274 354 384**

**ONEAGENCY**  
THE PROPERTY SPECIALISTS



**RHYS & SARA VIDGEN**  
YOUR LOCAL COASTAL PROPERTY PEOPLE

R. 027 600 5450  
S. 027 214 8119  
vidgens@oatps.nz

Licensed REAA 2008

**E**

**Vicki Offen**

021 212 7842  
vicki@edinburgh.co.nz

**Edinburgh**

Edinburgh Realty Ltd. Licensed under the REAA 2008



**WHAT DO YOU  
STAND FOR?**

**"BUSINESS OPPORTUNITIES AND A  
STRONG LOCAL ECONOMY"**



**MAKE A STAND.  
STAND FOR COUNCIL.**

**[WWW.DUNEDIN.GOV.TZ/ELECTIONS](http://WWW.DUNEDIN.GOV.TZ/ELECTIONS)**

**PŌTI 2022** **VOTE 2022**

**DUNEDIN CITY COUNCIL**



## What's going on? East Otago Art Group

Does the next Ralph Hotere live in Karitane? Are you the next Rita Angus? If so, you are obviously a member of the East Otago Art Group, a friendly group of local artists.

The Group was established over 20 years ago and members work in oil, acrylics, water-colours. Painting styles vary and include abstracts, portraits, landscapes, architectural style drawings, works in black and white, works that capture the light and atmosphere of Otago, pastels. But if you sculpt in wood, clay or whatever you are most welcome. One member produces knitted sculptures. Artists working in any kind of mediums such as pottery or felt art are welcome to share ideas and get feedback on their work.

Some members exhibit at the Otago Arts Society annual exhibition. This year, the Group plans to exhibit at the Community Fete to be held on 10 September in the EO Events Centre. You can buy a painting or enjoy the spinning, dying and knitting demonstration or learn how to paint with acrylics.

At the beginning of the year, the Group embarked on a programme of relevant lessons and demonstrations. Recently, a commercial artist gave an interactive presentation on the composition of art works. Examples of sessions coming up are 'working with chalk and pastels' (31 August) and 'Celtic patterns and pottery decorating' (28 September). The full and varied programme is on Facebook and well worth a look. Members can also work on their own projects and bring their own materials. Morning tea and coffee are provided along with delicious homemade snacks. Members usually bring lunch and often stay a lot longer than 2pm! New members are very welcome so why not drop in and check out what's going on.

This is the group for you if you are looking for a mindful and relaxing activity and want to switch off from everyday cares. Or, you have a box of paints and a handful of brushes in a cupboard that you were going to use 'one day', or you want to produce something beautiful and unique. Or you want to step out of your comfort zone and learn new skills with a group of new friends.

**More information** Christine Leov-Lealand 021 061 4485 or Reywa Brown 022 254 7620

Facebook East Otago Art Group

Cost \$10 per year and \$5 session

Meetings Alternate Wednesdays

Time Drop in anytime between 10.30 – 2pm

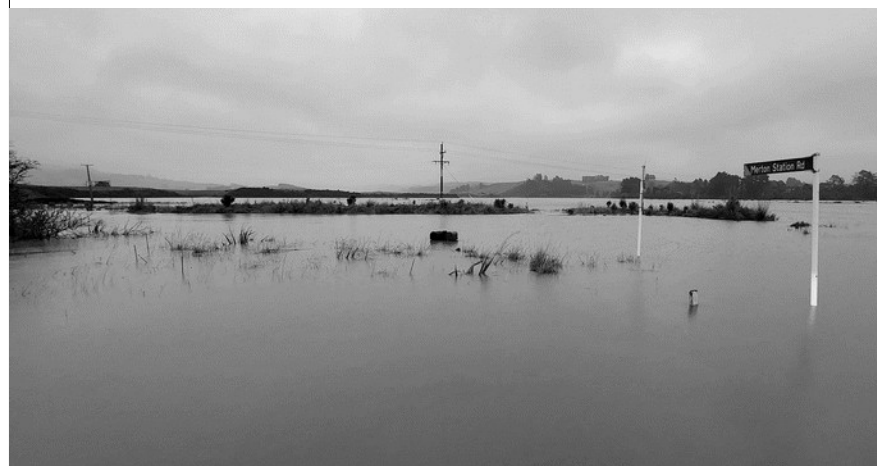
Venue St. John's Church Hall, Beach Street, Waikouaiti

To find out what's going on in the Waikouaiti and Karitane area go to <https://www.waikouaiti.co.nz> and check out Directories.

**Catherine Robinson**

## RAIN, RAIN, RAIN AND FLOODING

Towns were cut off, schools closed and boats swept from moorings as parts of the South were inundated with up to 150mm of rain on the 27<sup>th</sup> July. Coastal Otago was the hardest hit, with State Highway 1 closed between Dunedin and Palmerston for much of the day, reopening at 4.30pm. In Karitane, two boats broke free from their moorings and were swept along by the current for about 300m. The Dunedin City Council reported 28 road closures across the city. Our tight knit local facebook pages kept everyone informed and supplied great photos throughout the day.



**South Link Health Group East Otago Health**

**Waikouaiti Clinic 03 465 7599**  
 Tuesday 8:30am – 5pm  
 Wednesday 8:30am – 1pm  
 Friday 8:30am – 5pm

**Palmerston Clinic 03 465 1444**  
 Mon-Fri 8:30am – 5pm

After hours URGENT calls: 03 465 1444, 1  
 Medical Emergency 111



## BBMR MOTOCROSS

Are you looking for a place to ride locally? Possible coaching for younger riders. If you are responsible and happy to help with occasional track maintenance, contact Lindsay 021 216 3929.

## WAIKOUAITI LIBRARY

### Book Passion

Come along and talk about the books you love. All welcome. **Tuesday 9 August 7pm**

### Get Well Bags

If your child is home sick, we can help entertain them with a Get Well Bag that you pick up. It can include: books, talking books, DVDs. This is a free service, but you need to be a Library member. We can put together a bag for older people as well. Give us a call on 03 465 9110.

### Click & Collect

We will choose up to 10 items for you from our collections. You can let us know the sort of things to you like to read and watch. You can also pick up the items you have on hold (hold charges apply for adult members). We will arrange a time for you to pick your items from the library foyer. Call us at the library: 03 465 9110 or go online: <https://www.dunedinlibraries.govt.nz/services/click-collect>  
 No more overdue fees! Just in case you haven't heard, a reminder we don't charge anyone overdue fees anymore

### Digital Resources

Find eBooks and eAudio (including Romance Book Cloud for romance lovers). Watch movies for free through Beamafilm. Learn a language Find genealogy resources. Read newspapers and magazines from around the world via PressReader  
 Online at: <https://www.dunedinlibraries.govt.nz/>

### DCC Service Centre

Get your Bee Cards and top-ups, pay your rates, register your dog, pay parking fines, buy DCC rubbish bags, get your 75+ parking permit, You can do it all at Waikouaiti Library – where parking is free!

### LEGO Club

Make something cool with our LEGO. First Saturday of the month **Saturday 6 August** at 11am

### Wriggle and Rhyme

Music and movement for babies and toddlers (during school terms) Friday mornings at 10.30am

### Storytime

Bring your child along to the Library for stories suitable for babies and pre-schoolers (during school terms) **Friday mornings** after Wriggle & Rhyme (around 11.15 am)

### COMMUNITY FETE

**10<sup>th</sup> September 2022.** 10am – 2pm, East Otago Events Centre

### BE READY EAST OTAGO EXPO

**12<sup>th</sup> November 2022.** East Otago Events Centre (details in the October issue)

## COMMUNITY EMERGENCY HUB

Your go to in an emergency  
 Waikouaiti – East Otago Events Centre  
 Karitane – Puketeraki Marae

## EAST OTAGO EVENTS CENTRE BOOKINGS

Phone: 027 340 8176  
 Email: [eoec.info.bookings@gmail.com](mailto:eoec.info.bookings@gmail.com)

**FOOD BANK**

EAST OTAGO  
 FOODBANK  
 PROJECT  
 HELPING OUR  
 COMMUNITY

NEED HELP? CONTACT US AT  
[POWA.ED@GMAIL.COM](mailto:POWA.ED@GMAIL.COM)

WE ACCEPT ANY NEW OR  
 UNEXPIRED FOOD ITEMS

POWA

POWA is a registered charitable organization that builds community connections and promotes the wellbeing of local families and whanau.

We love to hear from you! Send us your local photos and stories. Deadline for newsletter copy is the last Sunday of the month. Please keep your contributions to 250 words or less.

(027) 253 9205

[powa.ed@gmail.com](mailto:powa.ed@gmail.com)

[facebook.com/POWA](https://facebook.com/POWA)

P O Box 21, Waikouaiti 9510

203 Main Road, Waikouaiti

POWA

## LEARNING SUPPORT

Available for students aged 6-14 years to help support their learning at school.

Assistance is available in: Numeracy, Literacy, Processing, Spelling, also available Speech and Drama – To Diploma level.

**For more information please contact:**  
 Kathleen Oldham 465 7653



Specialising in new homes, alterations, renovations and general building work. Quality building at its best.

Visit our website: [www.jdbuilders.nz](http://www.jdbuilders.nz)

Contact: 027 354 1754 [jeff@jdbuilders.nz](mailto:jeff@jdbuilders.nz)

## FIREWOOD KING LTD



CALL NOW FOR GREAT WOOD 022 125 5236

**Advertise  
 Your  
 Event Here  
 And Get  
 Noticed!**